

## SIMPLE WESTERN CERTIFIED ANTIBODY DATASHEET

[View  
Antibody Link](#)

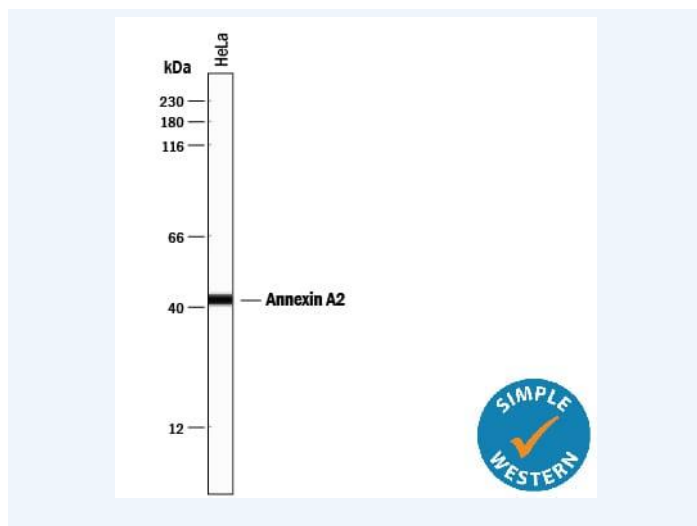


Figure1 Simple Western lane view shows lysates of HeLa human cervical epithelial carcinoma cell line, loaded at 0.2 mg/mL. A specific band was detected for Annexin A2 at approximately 43 kDa (as indicated) using 1  $\mu$ g/mL of Mouse Anti-Human/Mouse/Rat Annexin A2 Monoclonal Antibody (Catalog # MAB3928). This experiment was conducted under reducing conditions and using the 12-230 kDa separation system.

| PROTEIN TARGET/ANTIBODY         |  |
|---------------------------------|--|
| Protein Target                  | Annexin A2   |
| Protein Isoform                 | Annexin A2   |
| Antibody Type                   | Primary  |
| Host Species/Clonality          | Mouse Monoclonal                                   |
| ASSAY                           |  |
| Sample Type                     | HeLa human cervical epithelial carcinoma cell line |
| Sample Concentration            | 0.2 mg/mL  |
| Antibody Concentration/Dilution | 1 $\mu$ g/mL                                       |
| Antibody Diluent                |  |
| Detection Mode                  | Chemiluminescence                                  |
| Separation Type                 | Size   |
| Matrix                          | 12-230 kDa   |
| Observed kDa                    | 43   |
| Publications                    | None listed  |

This antibody is certified for Gel-Free, Blot Free, Hands Free Simple Western Systems. To learn about Simple Western Systems, available Simple Western antibodies, or new antibody submissions visit the links below. For additional information, please contact [support@proteinsimple.com](mailto:support@proteinsimple.com).

[Simple Western Systems](#)

[Simple Western Antibody Database](#)

[Simple Western Antibody Submission](#)