

SIMPLE WESTERN CERTIFIED ANTIBODY DATASHEET

[View
Antibody Link](#)

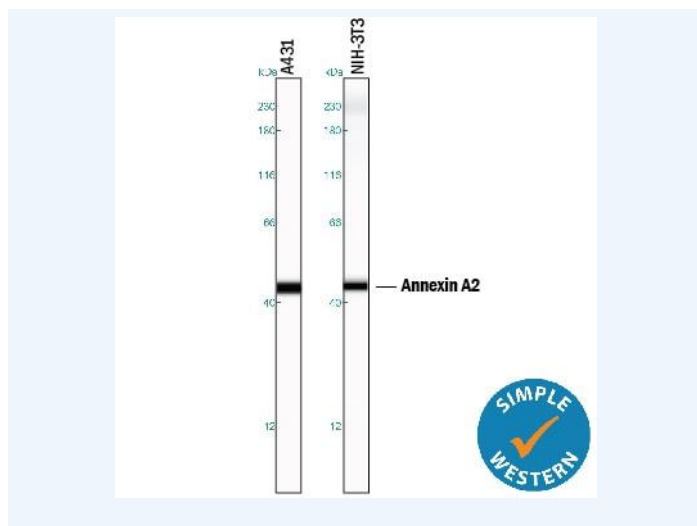


Figure1 Simple Western lane view shows lysates of A431 human epithelial carcinoma cell line and NIH-3T3 mouse embryonic fibroblast cell line, loaded at 0.2 mg/mL. A specific band was detected for Annexin A2 at approximately 45 kDa (as indicated) using 50 µg/mL of Goat Anti-Human/Mouse/Rat Annexin A2 Antigen Affinity-purified Polyclonal Antibody (Catalog # AF3928) followed by 1:50 dilution of HRP-conjugated Anti-Goat IgG Secondary Antibody (Catalog # HAF109) . This experiment was conducted under reducing conditions and using the 12-230 kDa separation system. Non-specific interaction with the 230 kDa Simple Western standard may be seen with this antibody.

PROTEIN TARGET/ANTIBODY	
Protein Target	Annexin A2
Protein Isoform	Annexin A2
Antibody Type	Primary
Host Species/Clonality	Goat Polyclonal
ASSAY	
Sample Type	A431 human epithelial carcinoma cell line and NIH-3T3 mouse embryonic fibroblast cell line
Sample Concentration	0.2 mg/mL
Antibody Concentration/Dilution	50 µg/mL
Antibody Diluent	
Detection Mode	Chemiluminescence
Separation Type	Size
Matrix	12-230 kDa
Observed kDa	45 kDa
Publications	None listed

This antibody is certified for Gel-Free, Blot Free, Hands Free Simple Western Systems. To learn about Simple Western Systems, available Simple Western antibodies, or new antibody submissions visit the links below. For additional information, please contact support@proteinsimple.com.

[Simple Western Systems](#)

[Simple Western Antibody Database](#)

[Simple Western Antibody Submission](#)