

SIMPLE WESTERN CERTIFIED ANTIBODY DATASHEET

[View Antibody Link](#)

1



Figure 1: Aminopeptidase N/CD13 Antibody [NBP2-33855] - Simple Western lane view shows a specific band for Aminopeptidase N/CD13 in 0.2 mg/ml of HEL (left) and H. Kidney (right) lysate(s). This experiment was performed under reducing conditions using the 12-230 kDa separation systems.

2

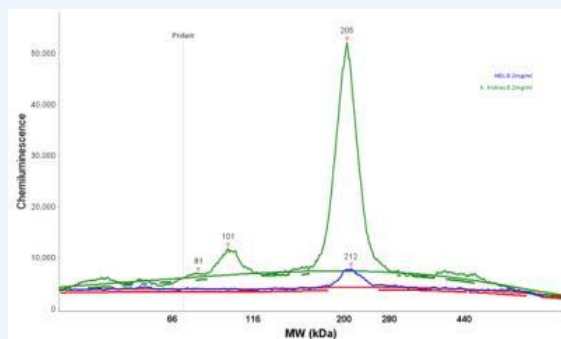


Figure 2: Aminopeptidase N/CD13 Antibody [NBP2-33855] - Electropherogram image of the corresponding Simple Western lane view. Aminopeptidase N/CD13 antibody was used at 1:25 dilution on HEL and H. Kidney lysate(s) respectively.

PROTEIN TARGET/ANTIBODY	
Protein Target	Aminopeptidase N/CD13
Protein Isoform	Aminopeptidase N/CD13 Antibody
Antibody Type	Primary
Host Species/Clonality	Rabbit Polyclonal
ASSAY	
Sample Type	HEL and H. Kidney lysates
Sample Concentration	0.2 mg/ml
Antibody Concentration	1:25
Antibody Diluent	
Detection Mode	Chemiluminescence
Separation Type	Size
Matrix	12-230 kDa
Observed kDa	

PUBLICATIONS
None Listed

This antibody is validated for Gel-Free, Blot Free, Hands Free Simple Western Systems. To learn about Simple Western Systems, available Simple Western antibodies, or new antibody submissions visit the links below. For additional information, please contact support@proteinsimple.com.

[Simple Western Systems](#)

[Simple Western Antibody Database](#)

[Simple Western Antibody Submission](#)