

SIMPLE WESTERN CERTIFIED ANTIBODY DATASHEET

[...View
Antibody Link](#)

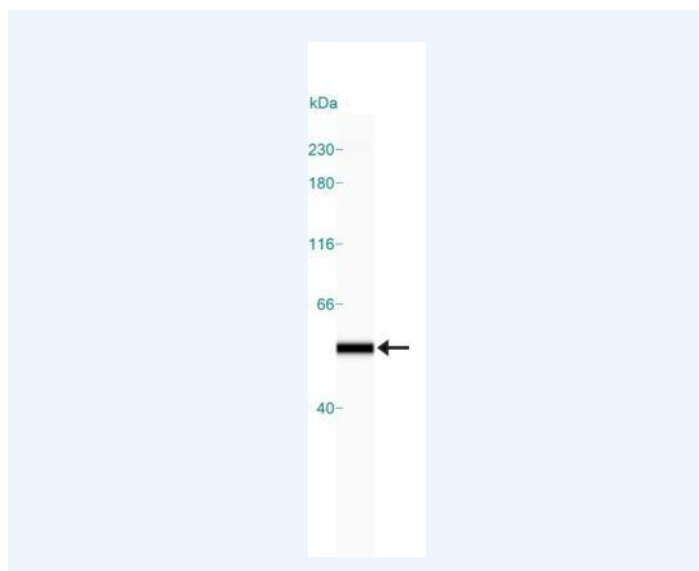


Figure1 Simple Western: alpha Tubulin Antibody (DM1A) [NB100-690] - Simple Western lane view shows a specific band for alpha Tubulin in 1.0 mg/ml of HeLa lysate. This experiment was performed under reducing conditions using the 12-230 kDa separation system. Alpha tubulin molecular weight: 50 kDa.

PROTEIN TARGET/ANTIBODY	
Protein Target	Alpha tubulin
Protein Isoform	Alpha tubulin
Antibody Type	Primary
Host Species/Clonality	Mouse Monoclonal
ASSAY	
Sample Type	HeLa lysate
Sample Concentration	1.0 mg/ml
Antibody Concentration/Dilution	1:50
Antibody Diluent	
Detection Mode	Chemiluminescence
Separation Type	Size
Matrix	12-230 kDa
Observed kDa	55
Publications	None listed

This antibody is validated for Gel-Free, Blot Free, Hands Free Simple Western Systems. To learn about Simple Western Systems, available Simple Western antibodies, or new antibody submissions visit the links below. For additional information, please contact support@proteinsimple.com.

[Simple Western Systems](#)

[Simple Western Antibody Database](#)

[Simple Western Antibody Submission](#)