

SIMPLE WESTERN CERTIFIED ANTIBODY DATASHEET

[View
Antibody Link](#)

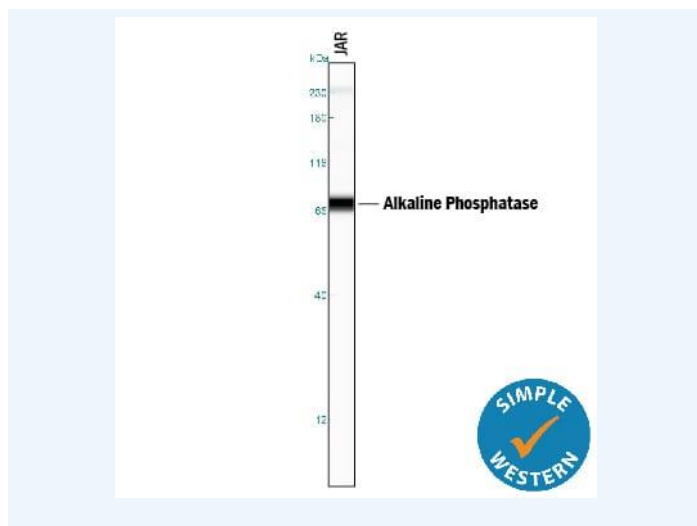


Figure1 Simple Western lane view shows lysates of JAR human choriocarcinoma cell line, loaded at 0.2 mg/mL. A specific band was detected for Alkaline Phosphatase/ALPP at approximately 74 kDa (as indicated) using 10 µg/mL of Mouse Anti-Human Alkaline Phosphatase/ALPP Monoclonal Antibody (Catalog # MAB59051). This experiment was conducted under reducing conditions and using the 12-230 kDa separation system. Non-specific interaction with the 230 kDa Simple Western standard may be seen with this antibody.

PROTEIN TARGET/ANTIBODY	
Protein Target	Alkaline Phosphatase/ALPP
Protein Isoform	Alkaline Phosphatase/ALPP
Antibody Type	Primary
Host Species/Clonality	Mouse Monoclonal
ASSAY	
Sample Type	JAR human choriocarcinoma cell line
Sample Concentration	0.2 mg/mL
Antibody Concentration/Dilution	10 µg/mL
Antibody Diluent	
Detection Mode	Chemiluminescence
Separation Type	Size
Matrix	12-230 kDa
Observed kDa	74 kDa
Publications	None listed

This antibody is certified for Gel-Free, Blot Free, Hands Free Simple Western Systems. To learn about Simple Western Systems, available Simple Western antibodies, or new antibody submissions visit the links below. For additional information, please contact support@proteinsimple.com.

[Simple Western Systems](#)

[Simple Western Antibody Database](#)

[Simple Western Antibody Submission](#)