

SIMPLE WESTERN CERTIFIED ANTIBODY DATASHEET

[View
Antibody Link](#)

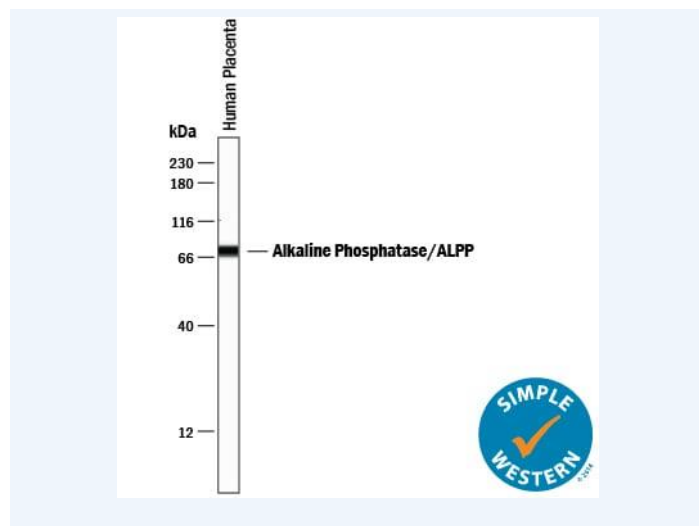


Figure1 Simple Western lane view shows lysates of human placenta tissue, loaded at 0.2 mg/mL. A specific band was detected for Alkaline Phosphatase/ALPP/ALPI at approximately 76 kDa (as indicated) using 10 µg/mL of Sheep Anti-Human Alkaline Phosphatase/ALPP/ALPI Antigen Affinity-purified Polyclonal Antibody (Catalog # AF5905) followed by 1:50 dilution of HRP-conjugated Anti-Sheep IgG Secondary Antibody. This experiment was conducted under reducing conditions and using the 12-230 kDa separation system.

| PROTEIN TARGET/ANTIBODY | |
|---------------------------------|--------------------------------|
| Protein Target | Alkaline Phosphatase/ALPP/ALPI |
| Protein Isoform | Alkaline Phosphatase/ALPP/ALPI |
| Antibody Type | Primary |
| Host Species/Clonality | Sheep Polyclonal |
| ASSAY | |
| Sample Type | Human placenta tissue |
| Sample Concentration | 0.2 mg/mL |
| Antibody Concentration/Dilution | 10 µg/mL |
| Antibody Diluent | |
| Detection Mode | Chemiluminescence |
| Separation Type | Size |
| Matrix | 12-230 |
| Observed kDa | 76 kDa |
| Publications | None listed |

This antibody is certified for Gel-Free, Blot Free, Hands Free Simple Western Systems. To learn about Simple Western Systems, available Simple Western antibodies, or new antibody submissions visit the links below. For additional information, please contact support@proteinsimple.com.

[Simple Western Systems](#)

[Simple Western Antibody Database](#)

[Simple Western Antibody Submission](#)