

SIMPLE WESTERN CERTIFIED ANTIBODY DATASHEET

[View
Antibody Link](#)

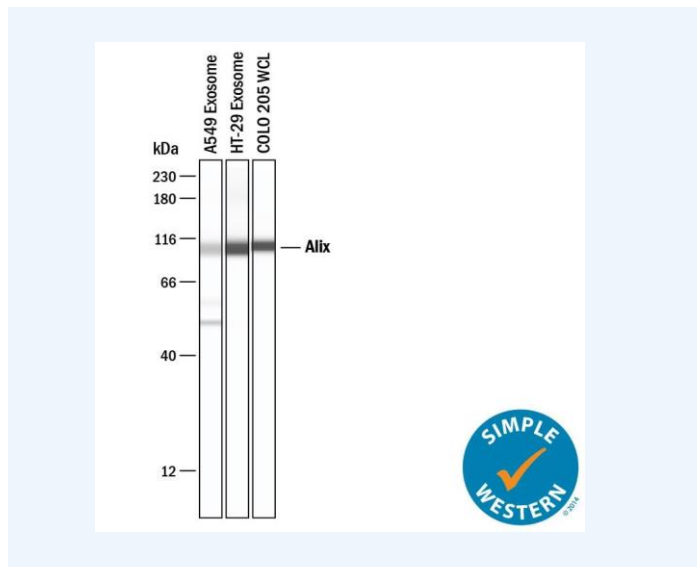


Figure1 Alix Antibody [NBP1-49701] - Simple Western lane view shows lysates of Exosome Standards (A549 cell line) (NBP3-11645), exosome standards (HT29 cell line) (NBP3-11685), and COLO 205 human colorectal adenocarcinoma cell line whole cell lysate (WCL), loaded at 0.2 mg/mL. A specific band was detected for Alix antibody (NBP1-49701) at approximately 106 kDa (as indicated) using 1:10 ug/mL of Alix antibody. This experiment was conducted under reducing conditions and using the 12-230 kDa separation system.

PROTEIN TARGET/ANTIBODY	
Protein Target	Alix
Protein Isoform	Alix
Antibody Type	Primary
Host Species/Clonality	Rabbit Polyclonal
ASSAY	
Sample Type	Exosomes standard from Human Plasma, Serum, A549 (Novus Biologicals)
Sample Concentration	0.2 mg/ml
Antibody Concentration/Dilution	1:10
Antibody Diluent	
Detection Mode	Chemiluminescence
Separation Type	Size
Matrix	12-230 kDa
Observed kDa	
Publications	None listed

This antibody is validated for Gel-Free, Blot Free, Hands Free Simple Western Systems. To learn about Simple Western Systems, available Simple Western antibodies, or new antibody submissions visit the links below. For additional information, please contact support@proteinsimple.com.

[Simple Western Systems](#)

[Simple Western Antibody Database](#)

[Simple Western Antibody Submission](#)