

SIMPLE WESTERN CERTIFIED ANTIBODY DATASHEET

[View
Antibody Link](#)

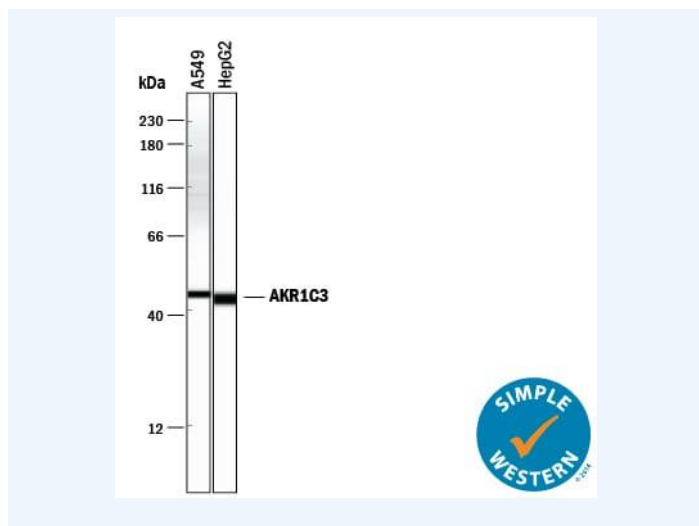


Figure1 Simple Western lane view shows lysates of A549 human lung carcinoma cell line and HepG2 human hepatocellular carcinoma cell line, loaded at 0.5 mg/mL. A specific band was detected for Aldo-keto Reductase 1C3/AKR1C3 at approximately 45 kDa (as indicated) using 5 µg/mL of Mouse Anti-Human Aldo-keto Reductase 1C3/AKR1C3 Monoclonal Antibody (Catalog # MAB7678) . This experiment was conducted under reducing conditions and using the 12-230 kDa separation system.

PROTEIN TARGET/ANTIBODY	
Protein Target	Aldo-keto Reductase 1C3/AKR1C3
Protein Isoform	Aldo-keto Reductase 1C3/AKR1C3
Antibody Type	Primary
Host Species/Clonality	Mouse Monoclonal
ASSAY	
Sample Type	A549 human lung carcinoma cell line and HepG2 human hepatocellular carcinoma cell line
Sample Concentration	0.5 mg/mL
Antibody Concentration/Dilution	5 µg/mL
Antibody Diluent	
Detection Mode	Chemiluminescence
Separation Type	Size
Matrix	12-230 kDa
Observed kDa	45 kDa
Publications	None listed

This antibody is certified for Gel-Free, Blot Free, Hands Free Simple Western Systems. To learn about Simple Western Systems, available Simple Western antibodies, or new antibody submissions visit the links below. For additional information, please contact support@proteinsimple.com.

[Simple Western Systems](#)

[Simple Western Antibody Database](#)

[Simple Western Antibody Submission](#)