

SIMPLE WESTERN CERTIFIED ANTIBODY DATASHEET

[View
Antibody Link](#)

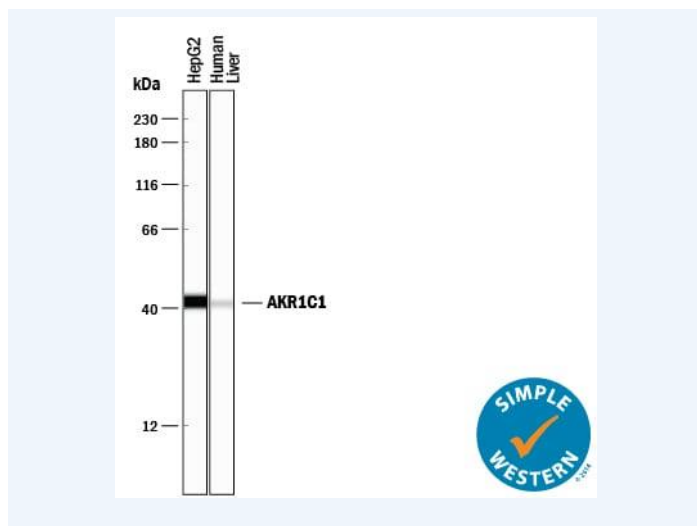


Figure1 Simple Western lane view shows lysates of HepG2 human hepatocellular carcinoma cell line and human liver tissue, loaded at 0.5 mg/mL. A specific band was detected for Aldo-keto Reductase 1C1/AKR1C1 at approximately 41 kDa (as indicated) using 1 μ g/mL of Mouse Anti-Human Aldo-keto Reductase 1C1/AKR1C1 Monoclonal Antibody (Catalog # MAB6529). This experiment was conducted under reducing conditions and using the 12-230 kDa separation system.

PROTEIN TARGET/ANTIBODY	
Protein Target	Aldo-keto Reductase 1C1/AKR1C1
Protein Isoform	Aldo-keto Reductase 1C1/AKR1C1
Antibody Type	Primary
Host Species/Clonality	Mouse Monoclonal
ASSAY	
Sample Type	HepG2 human hepatocellular carcinoma cell line and human liver tissue
Sample Concentration	0.5 mg/mL
Antibody Concentration/Dilution	1 μ g/mL
Antibody Diluent	
Detection Mode	Chemiluminescence
Separation Type	Size
Matrix	12-230 kDa
Observed kDa	41 kDa
Publications	None listed

This antibody is certified for Gel-Free, Blot Free, Hands Free Simple Western Systems. To learn about Simple Western Systems, available Simple Western antibodies, or new antibody submissions visit the links below. For additional information, please contact support@proteinsimple.com.

[Simple Western Systems](#)

[Simple Western Antibody Database](#)

[Simple Western Antibody Submission](#)