

SIMPLE WESTERN CERTIFIED ANTIBODY DATASHEET

[View
Antibody Link](#)

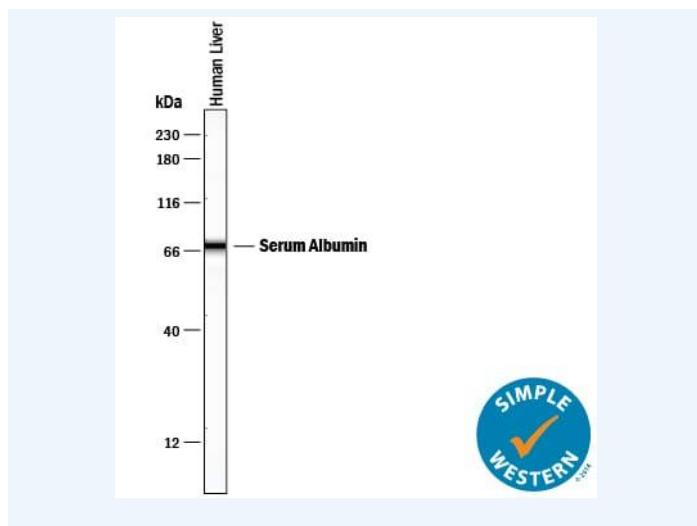


Figure1 Simple Western lane view shows lysates of human liver tissue, loaded at 0.2 mg/mL. A specific band was detected for Albumin at approximately 64 kDa (as indicated) using 10 µg/mL of Mouse Anti-Human Serum Albumin Monoclonal Antibody (Catalog # MAB1455). This experiment was conducted under reducing conditions and using the 12-230 kDa separation system.

PROTEIN TARGET/ANTIBODY	
Protein Target	Albumin
Protein Isoform	Albumin
Antibody Type	Primary
Host Species/Clonality	Goat Polyclonal
ASSAY	
Sample Type	Human liver tissue, mouse liver tissue, hepatocyte differentiated iBJ6 human induced pluripotent stem cell line, and human serum
Sample Concentration	0.2 mg/mL
Antibody Concentration/Dilution	5-10 µg/mL
Antibody Diluent	
Detection Mode	Chemiluminescence
Separation Type	Size
Matrix	
Observed kDa	64 kDa
Publications	None listed

This antibody is certified for Gel-Free, Blot Free, Hands Free Simple Western Systems. To learn about Simple Western Systems, available Simple Western antibodies, or new antibody submissions visit the links below. For additional information, please contact support@proteinsimple.com.

[Simple Western Systems](#)

[Simple Western Antibody Database](#)

[Simple Western Antibody Submission](#)