

SIMPLE WESTERN CERTIFIED ANTIBODY DATASHEET

[View Antibody Link](#)

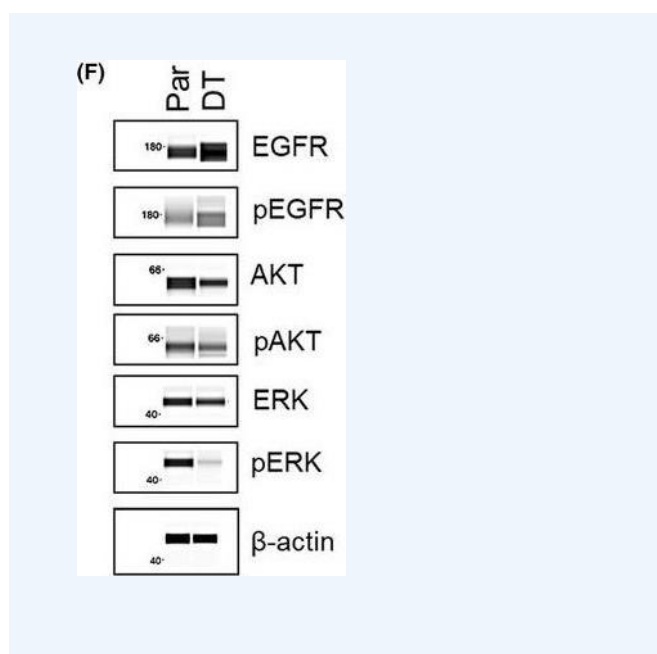


Figure: Establishment and Characterization of Acquired Lapatinib Tolerant Cell Lines. F, EGFR pathway signaling protein expression in H1650 parental and lapatinib DT cells. WES automated capillary western blotting of whole cell lysate using antibodies against the indicated proteins.

PROTEIN TARGET/ANTIBODY	
Protein Target	Akt
Protein Isoform	Unmodified
Antibody Type	Primary
Host Species/Clonality	Rabbit Monoclonal
ASSAY	
Sample Type	NCI-H1650
Sample Concentration	Not_Stated
Antibody Concentration/Dilution	Not_Stated
Antibody Diluent	
Detection Mode	Chemiluminescence
Separation Type	Size
Matrix	Not_Stated
Observed kDa	Not_Stated

*Image collected and cropped by CiteAb from the following publication <https://onlinelibrary.wiley.com/doi/abs/10.1096/fba.2019-00081> licensed under a CC-BY license

PUBLICATIONS

1. Howell, M. C., Green, R., et al. Lung cancer cells survive epidermal growth factor receptor tyrosine kinase inhibitor exposure through upregulation of cholesterol synthesis. *FASEB Bioadv.* 2020 Feb;2(2):90-105. 10.1096/FBA.2019-00081. PMID:32123859.
- 2.
- 3.
- 4.
- 5.
- 6.

This antibody is validated for Gel-Free, Blot Free, Hands Free Simple Western Systems. To learn about Simple Western Systems, available Simple Western antibodies, or new antibody submissions visit the links below. For additional information, please contact support@proteinsimple.com.

[Simple Western Systems](#)

[Simple Western Antibody Database](#)

[Simple Western Antibody Submission](#)

PAGE 2/2

bio-techne[®]

bio-techne.com

Global info@bio-techne.com bio-techne.com/find-us/distributors TEL +1 612 379 2956
North America TEL 800 343 7475 **Europe | Middle East | Africa** TEL +44 (0)1235 529449
China info.cn@bio-techne.com TEL +86 (21) 52380373

Trademarks and registered trademarks are the property of their respective owners.