

## SIMPLE WESTERN CERTIFIED ANTIBODY DATASHEET

[View  
Antibody Link](#)

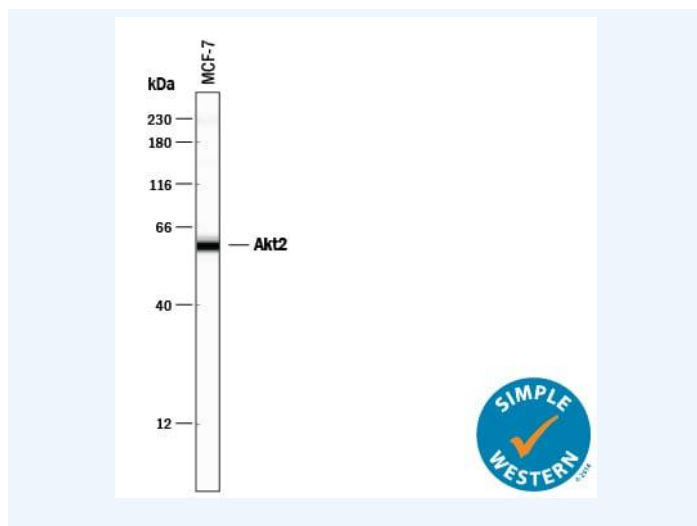


Figure1 Simple Western lane view shows lysates of MCF-7 human breast cancer cell line, loaded at 0.2 mg/mL. A specific band was detected for Akt2 at approximately 60 kDa (as indicated) using 2.5 µg/mL of Rabbit Anti-Human/Mouse/Rat Akt2 Antigen Affinity-purified Polyclonal Antibody (Catalog # AF2315) . This experiment was conducted under reducing conditions and using the 12-230 kDa separation system.

| PROTEIN TARGET/ANTIBODY         |                                     |
|---------------------------------|-------------------------------------|
| Protein Target                  | Akt2                                |
| Protein Isoform                 | Akt2                                |
| Antibody Type                   | Primary                             |
| Host Species/Clonality          | Rabbit Polyclonal                   |
| ASSAY                           |                                     |
| Sample Type                     | MCF-7 human breast cancer cell line |
| Sample Concentration            | 0.2 mg/mL                           |
| Antibody Concentration/Dilution | 2.5 µg/mL                           |
| Antibody Diluent                |                                     |
| Detection Mode                  | Chemiluminescence                   |
| Separation Type                 | Size                                |
| Matrix                          | 12-230 kDa                          |
| Observed kDa                    | 60 kDa                              |
| Publications                    | None listed                         |

This antibody is certified for Gel-Free, Blot Free, Hands Free Simple Western Systems. To learn about Simple Western Systems, available Simple Western antibodies, or new antibody submissions visit the links below. For additional information, please contact [support@proteinsimple.com](mailto:support@proteinsimple.com).

[Simple Western Systems](#)

[Simple Western Antibody Database](#)

[Simple Western Antibody Submission](#)