

SIMPLE WESTERN CERTIFIED ANTIBODY DATASHEET

[View Antibody Link](#)

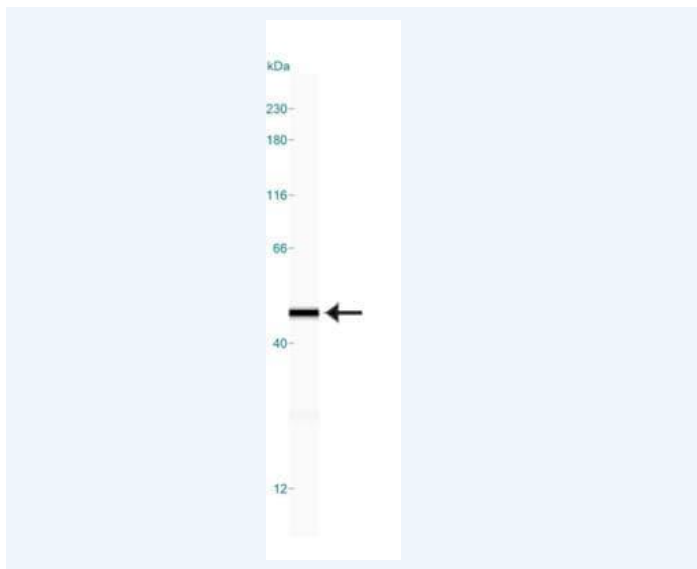


Figure1 Simple Western: Actin Gamma 1 Antibody [NB600-533] - Simple Western lane view shows a specific band for Actin Gamma 1 in 1.0 mg/ml of HeLa lysate. This experiment was performed under reducing conditions using the 12-230kDa separation system.

PROTEIN TARGET/ANTIBODY	
Protein Target	Actin Gamma 1
Protein Isoform	Actin Gamma 1
Antibody Type	Primary
Host Species/Clonality	Rabbit Polyclonal
ASSAY	
Sample Type	HeLa lysate 1.0 mg/ml
Sample Concentration	1.0 mg/ml
Antibody Concentration/Dilution	1:100
Antibody Diluent	
Detection Mode	Chemiluminescence
Separation Type	Size
Matrix	12-230 kDa
Observed kDa	49
Publications	None listed

This antibody is validated for Gel-Free, Blot Free, Hands Free Simple Western Systems. To learn about Simple Western Systems, available Simple Western antibodies, or new antibody submissions visit the links below. For additional information, please contact support@proteinsimple.com.

[Simple Western Systems](#)

[Simple Western Antibody Database](#)

[Simple Western Antibody Submission](#)