

SIMPLE WESTERN CERTIFIED ANTIBODY DATASHEET

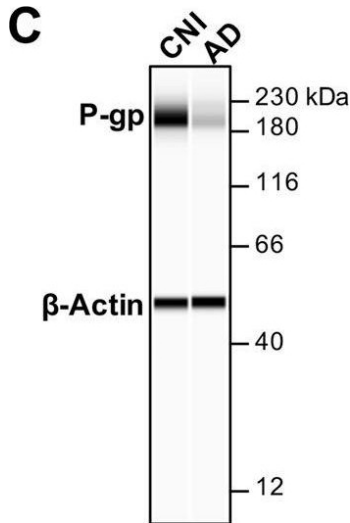


Figure 1C: P-glycoprotein (P-gp) protein expression levels are decreased and P-gp ubiquitination levels are increased in brain capillaries from Alzheimer's disease (AD) patients. (A) Representative image of a P-gp-immunostained (green) brain capillary isolated from brain tissue of a cognitive normal individual (CNI); nuclei were counterstained with DAPI (blue). (B) Negative control (no primary antibody): (B1; green channel); (B2; blue channel); (B3; overlay of green and blue channel) and (B4; transmitted light channel). (C) Representative WES™ image and (D) electropherogram showing reduced P-gp (blue shaded area) protein expression levels in brain capillaries isolated from human brain tissue (frontal cortex) of AD patients (n = 3) vs. CNIs (n = 3). (E) Overlay of electropherograms displayed in (D) show a reduction in the area under the curve (AUC) that represents P-gp protein expression levels (blue shaded area) in brain capillaries from AD patients (red line) relative to CNI (blue line).

See reference below for more information.

Image collected and cropped by CiteAb from:
Under copyright license:

Front Aging Neurosci. 2018 Jun 26;10:186.
CC BY

Target/Antibody

Antibody Target/Name	Anti-beta Actin antibody [mAbcam 8226] - Loading Control
Isoform	
Reactant	Not stated
Antibody Type	Primary
Host Species/Clonality	Not stated, Clone: mAbcam8226

Assay

Sample Type	Not stated
Antibody Dilution/Concentration	Not stated
Detection Mode	Not stated
Separation Type	SW - Size
Matrix	Not stated
Observed kDa or pI	Not stated
Publications [1 total]	[1] Front Aging Neurosci. 2018 Jun 26;10:186.

For additional information on this antibody: [View Antibody Link](#)

This antibody is certified for Gel-Free, Blot Free, Hands Free Simple Western Systems. To learn about Simple Western Systems, available Simple Western antibodies, or new antibody submissions visit the links below. For additional information, please contact

support@proteinsimple.com

[Simple Western Systems](#)

[Simple Western Antibody Database](#)

[Simple Western Antibody Submission](#)