

SIMPLE WESTERN CERTIFIED ANTIBODY DATASHEET

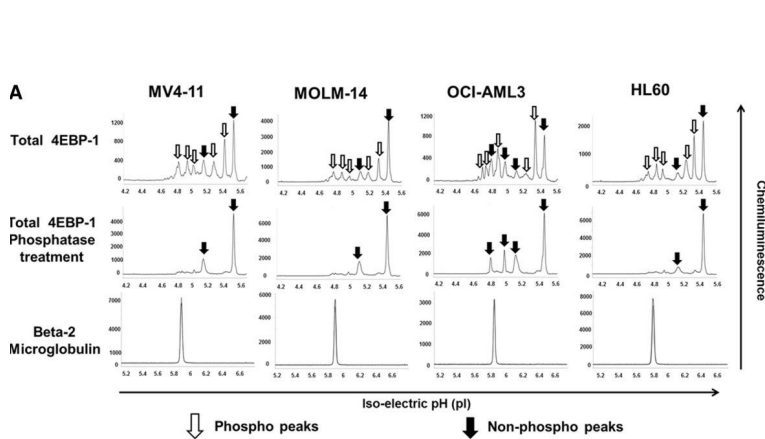


Figure 1A: Measurement of total 4EBP1 in AML cell lines. A) Electropherogram depicting levels of total and phosphorylated 4EBP1 in AML cell lines. AML cell lines MV4-11, MOLM-14, OCI-AML3 and HL60 were analyzed at baseline for expression of 4EBP1. 80 ng of protein was used for analysis. β -2 Microglobulin was used as loading control. Total 4EBP1 antibody detects both phosphorylated and non-phosphorylated protein. Samples were treated with lambda-phosphatase or reaction buffer alone and decrease in phosphorylation was noted. X-axis represents iso-electric pH and y-axis represents luminescence units. B) Change in phosphorylation was measured at exposure times varying between 30–960 secs after phosphatase treatment in all cell lines. The experiments were performed in triplicate (* $p < 0.05$).

See reference below for more information.

Image collected and cropped by CiteAb from:
Under copyright license:

J Transl Med. 2014 Jun 12;12:166.
CC BY

Target/Antibody

Antibody Target/Name	Beta-2-microglobulin
Isoform	Unmodified
Reactant	Homo sapiens (Human)
Antibody Type	Primary
Host Species/Clonality	Rabbit Monoclonal, Clone: EP2978Y

Assay

Sample Type	
Antibody Dilution/Concentration	Not stated
Detection Mode	Chemiluminescence
Separation Type	SW - Charge
Matrix	Not stated
Observed kDa or pI	Not stated
Publications [2 total]	[1] J Infect Dis. 2015 Jan 15;211(2):306-16. [2] J Transl Med. 2014 Jun 12;12:166.

For additional information on this antibody: [View Antibody Link](#)

This antibody is certified for Gel-Free, Blot Free, Hands Free Simple Western Systems. To learn about Simple Western Systems, available Simple Western antibodies, or new antibody submissions visit the links below. For additional information, please contact

support@proteinsimple.com

[Simple Western Systems](#)

[Simple Western Antibody Database](#)

[Simple Western Antibody Submission](#)