

SIMPLE WESTERN CERTIFIED ANTIBODY DATASHEET

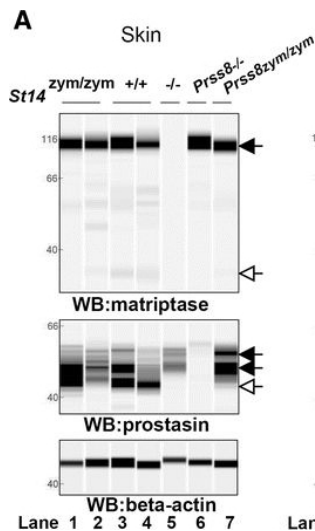


Figure 4A: Zymogen-locked matriptase induces epidermal prostatic processing. Protein extracts from skin (a), kidney (b), lung (c), and intestine (d) from newborn St14zym/zym (lanes 1 and 2), St14+/+ (lanes 3 and 4), and St14-/- (lane 5) littermates were separated by capillary electrophoresis and probed with antibodies against matriptase (top panels), prostatic (middle panels), or β -actin (bottom panels). Lanes 6 and 7 in (a) are skin extracts from prostatic null (Prss8-/-) and prostatic zymogen-locked (Prss8zym/zym) mice, respectively. Zymogens of matriptase and prostatic are indicated with filled arrows, and the activated forms are indicated with open arrows. n.s. non-specific. Positions of molecular weight markers (kDa) are indicated on the left. e Representative example of quantification of activated prostatic (open arrow) and zymogen prostatic (filled arrows) in protein extracts from skin from a newborn St14zym/zym mouse (top panel), St14+/+ mouse (second panel from top), and a new

See reference below for more information.

BMC Biol. 2017 Jun 1;15(1):46.

CC BY

Image collected and cropped by CiteAb from:

Under copyright license:

Target/Antibody

Antibody Target/Name	Actin, cytoplasmic 1
Isoform	
Reactant	Homo sapiens (Human)
Antibody Type	Primary
Host Species/Clonality	Mouse Monoclonal, Clone: AC

Assay

Sample Type	Blood
Antibody Dilution/Concentration	Not stated
Detection Mode	Chemiluminescence
Separation Type	SW - Size
Matrix	12-230 kDa
Observed kDa or pI	Not stated
Publications [5 total]	[1] Exp Biol Med (Maywood). 2022 May;247(10):842-847. [2] Curr Oncol. 2021 Oct 12;28(5):4080-4092. [3] J Biol Chem. 2016 Feb 5;291(6):2577-82. [4] Sci Rep. 2019 Aug 13;9(1):11790. [5] BMC Biol. 2017 Jun 1;15(1):46.

For additional information on this antibody: [View Antibody Link](#)

This antibody is certified for Gel-Free, Blot Free, Hands Free Simple Western Systems. To learn about Simple Western Systems, available Simple Western antibodies, or new antibody submissions visit the links below. For additional information, please contact

support@proteinsimple.com

[Simple Western Systems](#)

[Simple Western Antibody Database](#)

[Simple Western Antibody Submission](#)