

SIMPLE WESTERN CERTIFIED ANTIBODY DATASHEET

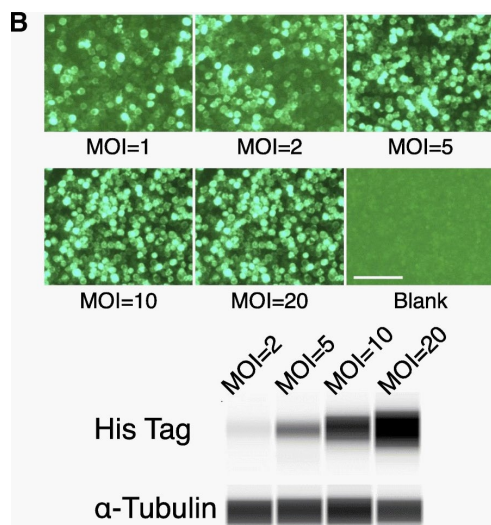


Figure 1B: Dystrophin R16/17.GFP.Pal protein is expressed in insect cells and localized at the cell membrane. a Configuration of recombinant dystrophin R16/17.GFP.Pal protein and R16/17 protein expression in insect cells. Top panel: light microscopy; Bottom panel: fluorescence microscopy for GFP signal; Left panel: 10X; Right panel: 20X. The dystrophin R16/17.GFP.Pal protein was successfully expressed in the baculovirus-insect cell system and localized at the cell membrane. Left scale bar = 50 μ m; Right scale bar = 10 μ m; b Optimal MOI was determined for R16/17 protein production. The GFP signal was observed on day one after baculovirus infection of High Five insect cells with different MOIs. The expression level from different MOIs was examined by western blot with an anti-His tag antibody, and α -tubulin serves as the loading control. Scale bar = 50 μ m; c Optimal harvesting time was determined for R16/17 protein production. High Five cells were infected with baculovirus (MOI = 20)

See reference below for more information.

Image collected and cropped by CiteAb from:
Under copyright license:

Mol Med. 2019 Jul 2;25(1):31.
CC BY

Target/Antibody

Antibody Target/Name	Anti-6X His tag® antibody [HIS.H8]
Isoform	
Reactant	Not stated
Antibody Type	Primary
Host Species/Clonality	Not stated, Clone: HIS.H8

Assay

Sample Type	Not stated
Antibody Dilution/Concentration	Not stated
Detection Mode	Not stated
Separation Type	SW - Size
Matrix	Not stated
Observed kDa or pI	Not stated
Publications [1 total]	[1] Mol Med. 2019 Jul 2;25(1):31.

For additional information on this antibody: [View Antibody Link](#)

This antibody is certified for Gel-Free, Blot Free, Hands Free Simple Western Systems. To learn about Simple Western Systems, available Simple Western antibodies, or new antibody submissions visit the links below. For additional information, please contact

support@proteinsimple.com

[Simple Western Systems](#)

[Simple Western Antibody Database](#)

[Simple Western Antibody Submission](#)