

SIMPLE WESTERN CERTIFIED ANTIBODY DATASHEET

E

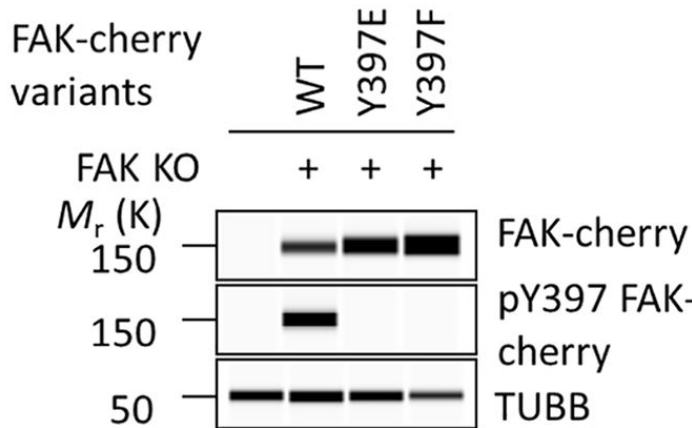


Figure 3E: Y397E FAK demonstrates residual activity. (A) Peptide pulldowns using bead-immobilized FERM-kinase linker domain peptides and recombinant SRC-GST. The pulldown blot indicates which samples captured SRC-GST, while the input blot indicates the amount of SRC-GST in each sample prior to experimentation. SRC-GST, SRC tagged with glutathione-s-transferase; Mr (K), weight in kilo-Daltons; aa, amino acid. (B) Chemiluminescent signal of SRC-GST bound to peptide in each pulldown sample. (C) FAK-null MEFs were transduced with lentiviral constructs encoding for WT FAK, Y397F FAK, and Y397E FAK. KO, knock-out; WT, wild-type. (D) Phase-contrast images of MEF lines expressing either WT, Y397F, Y397E or no FAK. KO, knock-out. (E) Western blots of FAK, pY397 FAK, and loading control TUBB in lysate of FAK variant MEF lines and FAK-null MEFs. TUBB, tubulin β -chain. (F) Western blots of total SRC, pY416 SRC, and TUBB in lysates of FAK variant MEF lines and FAK-null MEFs. (G) Adhesion turnover me

See reference below for more information.

Image collected and cropped by CiteAb from:
Under copyright license:

PLoS One. 2018 Jul 12;13(7):e0200558.
CC BY

Target/Antibody

Antibody Target/Name	Anti-beta Tubulin antibody
Isoform	
Reactant	Not stated
Antibody Type	Primary
Host Species/Clonality	Not stated

Assay

Sample Type	Not stated
Antibody Dilution/Concentration	Not stated
Detection Mode	Not stated
Separation Type	SW - Size
Matrix	Not stated
Observed kDa or pl	Not stated
Publications [1 total]	[1] PLoS One. 2018 Jul 12;13(7):e0200558.

For additional information on this antibody: [View Antibody Link](#)

This antibody is certified for Gel-Free, Blot Free, Hands Free Simple Western Systems. To learn about Simple Western Systems, available Simple Western antibodies, or new antibody submissions visit the links below. For additional information, please contact

support@proteinsimple.com

[Simple Western Systems](#)

[Simple Western Antibody Database](#)

[Simple Western Antibody Submission](#)