

Vendor: Abcam

Catalog #: ab75853

[View Antibody Link](#)

Simple Western Certified Antibody Datasheet

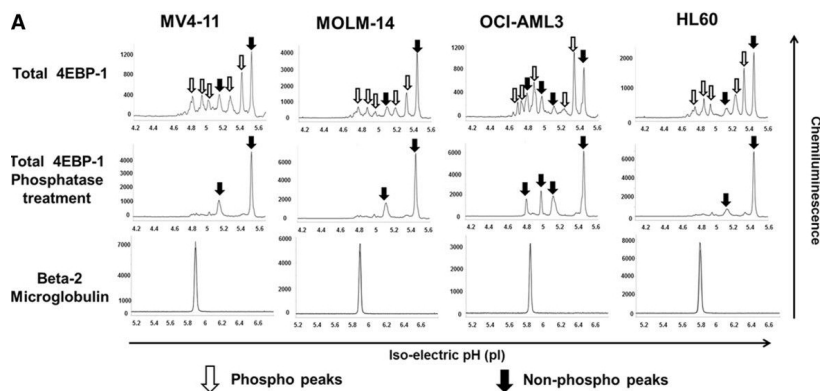


Figure 1A: Measurement of total 4EBP1 in AML cell lines. A) Electropherogram depicting levels of total and phosphorylated 4EBP1 in AML cell lines. AML cell lines MV4-11, MOLM-14, OCI-AML3 and HL60 were analyzed at baseline for expression of 4EBP1. 80 ng of protein was used for analysis. β-2 Microglobulin was used as loading control. Total 4EBP1 antibody detects both phosphorylated and non-phosphorylated protein. Samples were treated with lambda-phosphatase or reaction buffer alone and decrease in phosphorylation was noted. X-axis represents iso-electric pH and y-axis represents luminescence units. B) Change in phosphorylation was measured at exposure times varying between 30–960 secs after phosphatase treatment in all cell lines. The experiments were performed in triplicate (*p < 0.05).... See reference below for more information.

Image collected and cropped by CiteAb from:
Under copyright license:

J Transl Med. 2014 Jun 12;12:166.
CC BY

Antibody

Name	Anti-beta 2 Microglobulin antibody [EP2978Y]
Isoform	Unmodified
Reactant	Homo sapiens (Human)
Antibody Type	Primary
Host	Rabbit Monoclonal

Assay

Sample Type	
Antibody Dilution	Not stated
Detection Mode	Chemiluminescence
Separation Type	SW - Charge, Charge
Matrix	Not stated
Observed kDa or pI	Not stated
Publications (2 found)	J Infect Dis. 2015 Jan 15;211(2):306-16. // J Transl Med. 2014 Jun 12;12:166.

For additional information on this antibody [view antibody link](#).

This antibody is certified for Simple Western™ technology. To learn about Simple Western technology, available antibodies, or to submit new antibodies, visit the links below. For additional information, please contact: support@proteinsimple.com

[Simple Western Systems](#)

[Simple Western Antibody Database](#)

[Submit Antibody Validation Data](#)

biotechne // Global Developer, Manufacturer, and Supplier of High-Quality Reagents, Analytical Instruments, and Precision Diagnostics.

INCLUDES R&D Systems™ Novus Biologicals™ Tocris Bioscience™ ProteinSimple™ ACD™ ExosomeDx™ Asuragen® Lunaphore™

For research use or manufacturing purposes only. Trademarks and registered trademarks are the property of their respective owners.