

Vendor: Abcam

Catalog #: ab6276

[View Antibody Link](#)

Simple Western Certified Antibody Datasheet

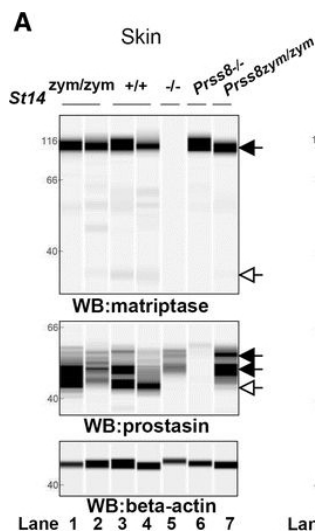


Figure 4A: Zymogen-locked matriptase induces epidermal prostatic acid phosphatase processing. Protein extracts from skin (a), kidney (b), lung (c), and intestine (d) from newborn St14zym/zym (lanes 1 and 2), St14+/+ (lanes 3 and 4), and St14-/- (lane 5) littermates were separated by capillary electrophoresis and probed with antibodies against matriptase (top panels), prostatic acid phosphatase (middle panels), or β-actin (bottom panels). Lanes 6 and 7 in (a) are skin extracts from prostatic acid phosphatase null (Prss8-/-) and prostatic acid phosphatase zymogen-locked (Prss8zym/zym) mice, respectively. Zymogens of matriptase and prostatic acid phosphatase are indicated with filled arrows, and the activated forms are indicated with open arrows. n.s. non-specific. Positions of molecular weight markers (kDa) are indicated on the left. e Representative example of quantification... See reference below for more information.

Image collected and cropped by CiteAb from: [BMC Biol. 2017 Jun 1;15\(1\):46.](#)

Under copyright license: CC BY

Antibody

Name	Anti-beta Actin antibody [AC-15]
Isoform	
Reactant	Homo sapiens (Human)
Antibody Type	Primary
Host	Mouse Monoclonal

Assay

Sample Type	Blood
Antibody Dilution	
Detection Mode	Chemiluminescence
Separation Type	Size
Matrix	12-230 kDa
Observed kDa	
Publications (8 found)	Exp Biol Med (Maywood). 2022 May;247(10):842-847. // Curr Oncol. 2021 Oct 12;28(5):4080-4092. // J Biol Chem. 2016 Feb 5;291(6):2577-82. // Sci Rep. 2019 Aug 13;9(1):11790. // BMC Biol. 2017 Jun 1;15(1):46. // Front Genet. 2022 Jun 6;13:913030. // Respir Res. 2023 Sep 23;24(1):227. // Cells. 2023 Nov 25;12(23):2707.

For additional information on this antibody [view antibody link](#).

This antibody is certified for Simple Western™ technology. To learn about Simple Western technology, available antibodies, or to submit new antibodies, visit the links below. For additional information, please contact: support@proteinsimple.com

[Simple Western Systems](#)

[Simple Western Antibody Database](#)

[Submit Antibody Validation Data](#)

biotechne® // Global Developer, Manufacturer, and Supplier of High-Quality Reagents, Analytical Instruments, and Precision Diagnostics.

INCLUDES R&D Systems™ Novus Biologicals™ Tocris Bioscience™ ProteinSimple™ ACD™ ExosomeDx™ Asuragen® Lunaphore™

For research use or manufacturing purposes only. Trademarks and registered trademarks are the property of their respective owners.