

Vendor: Abcam
Catalog #: ab4074
[View Antibody Link](#)

Simple Western Certified Antibody Datasheet

Figure 5A: Restoration of glycosylated α-DG in KO-FKRP myotubes after rAAV-FKRP transduction. (A) Expression of the FKRP protein by Simple Western from a non-edited wt clone (wt C.4) and KO-FKRP clone 65 (C.65) transduced with rAAV-FKRP at different MOI doses: 0/500/1000/2000/4000/8000/10,000/15,000. α-tubulin was used as a housekeeping protein. The Western blot of clone 6 is representative of the edited clones. (B) Quantification of FKRP protein expression, normalized by α-tubulin, in KO-FKRP clones 6, 28, and 65, transduced with rAAV-FKRP at different MOI doses: 0/500/1000/2000/4000/8000/10,000/15,000. (C) Expression of the α-DG glycosylated using I1H6 antibody and the total α-DG by Western blot in KO-FKRP clone 65 (C.65) transduced with rAAV-FKRP at different MOI doses: 0/1250/2500/5000... See reference below for more information.

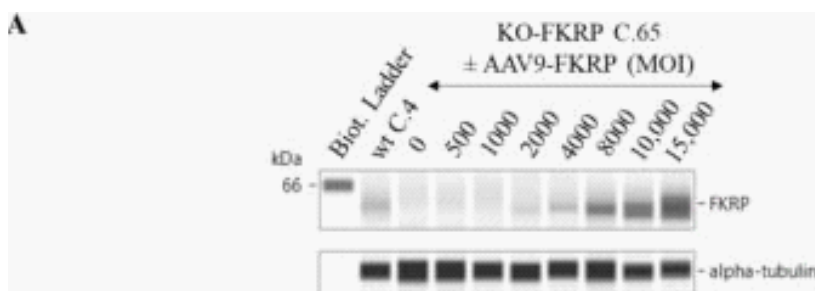


Image collected and cropped by CiteAb from:
Under copyright license:

Cells. 2023 Oct 12;12(20):2444.
CC-BY

Antibody

| | |
|---------------|---|
| Name | Anti-alpha Tubulin antibody - Loading Control |
| Isoform | not_applicable |
| Reactant | Homo sapiens (Human) |
| Antibody Type | Primary |
| Host | Rabbit Polyclonal |

Assay

| | |
|------------------------|---------------------------------|
| Sample Type | NULL |
| Antibody Dilution | 1:1000 |
| Detection Mode | Chemiluminescence |
| Separation Type | Size |
| Matrix | 12-230 kDa |
| Observed kDa | 53 kDa |
| Publications (1 found) | Cells. 2023 Oct 12;12(20):2444. |

For additional information on this antibody [view antibody link](#).

This antibody is certified for Simple Western™ technology. To learn about Simple Western technology, available antibodies, or to submit new antibodies, visit the links below. For additional information, please contact: support@proteinsimple.com

[Simple Western Systems](#)

[Simple Western Antibody Database](#)

[Submit Antibody Validation Data](#)

biotechne // Global Developer, Manufacturer, and Supplier of High-Quality Reagents, Analytical Instruments, and Precision Diagnostics.

INCLUDES R&D Systems™ Novus Biologicals™ Tocris Bioscience™ ProteinSimple™ ACD™ ExosomeDx™ Asuragen® Lunaphore™

For research use or manufacturing purposes only. Trademarks and registered trademarks are the property of their respective owners.