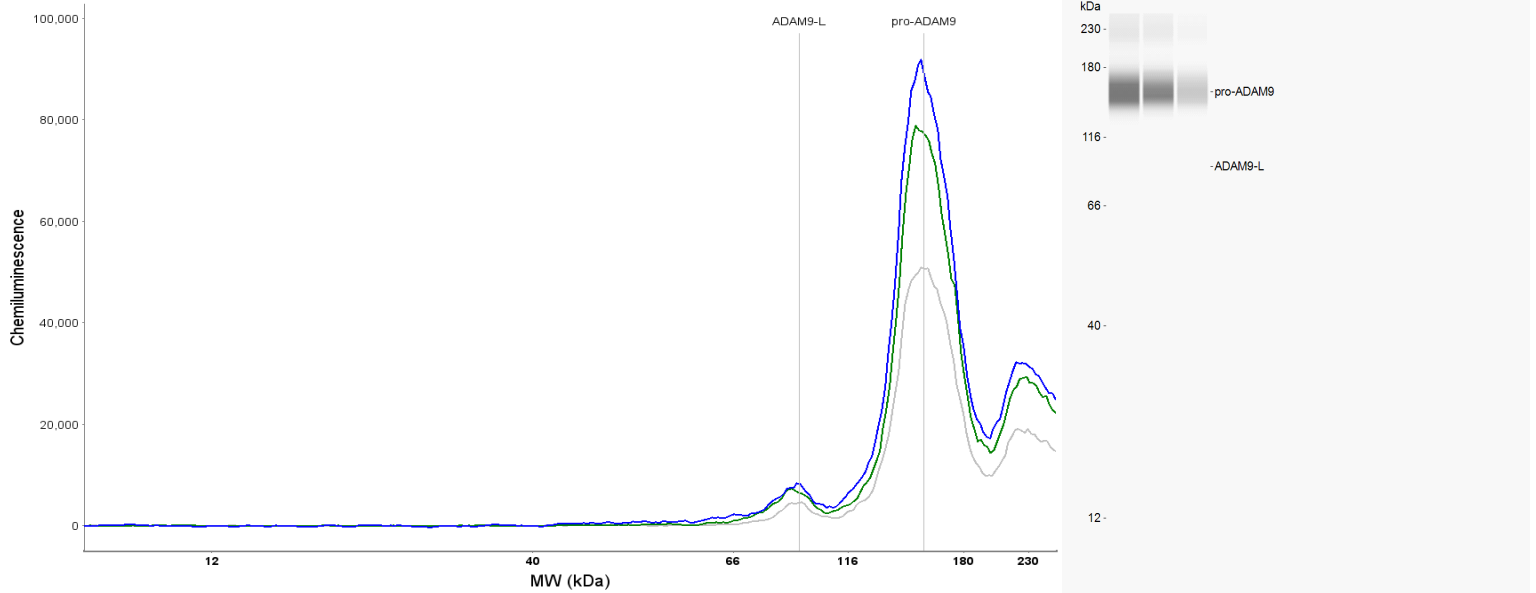


Simple Western Certified Antibody Datasheet



Antibody

Target	ADAM9
Host	Rabbit
Clonality	Monoclonal
Type	Primary

Assay

Assay Type	Size
Antibody Dilution	1:10, 1:50, 1:250
Detection	Chemiluminescence
Matrix	12–230 kDa
Observed kDa	95, 143–158
Sample Concentration	0.4 mg/mL
Sample Type / Prep.	NCI 460 whole-cell lysate

For additional information on this antibody [view antibody link](#).

This antibody is certified for Simple Western™ technology. To learn about Simple Western technology, available antibodies, or to submit new antibodies, visit the links below. For additional information, please contact:

support@proteinsimple.com

[Simple Western Systems](#)

[Simple Western Antibody Database](#)

[Submit Antibody Validation Data](#)