

## SIMPLE WESTERN CERTIFIED ANTIBODY DATASHEET

[View  
Antibody Link](#)

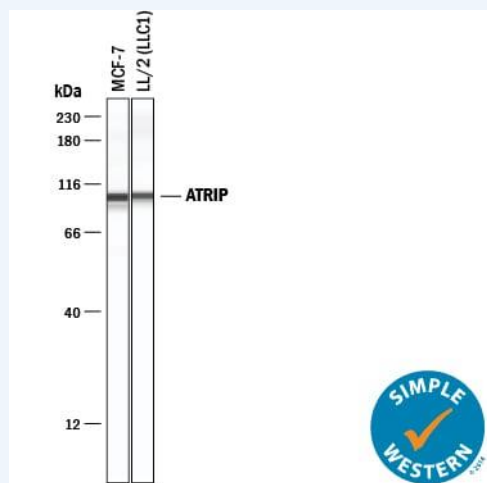


Figure1 Simple Western lane view shows lysates of MCF-7 human breast cancer cell line and LL/2 mouse Lewis lung carcinoma cell line, loaded at 0.2 mg/mL. A specific band was detected for ATRIP at approximately 100 kDa (as indicated) using 10 µg/mL of Sheep Anti-Human ATRIP Antigen Affinity-purified Polyclonal Antibody (Catalog # AF1579) followed by 1:50 dilution of HRP-conjugated Anti-Sheep IgG Secondary Antibody (Catalog # HAF016). This experiment was conducted under reducing conditions and using the 12-230 kDa separation system.

PROTEIN TARGET/ANTIBODY	
Protein Target	ATRIP
Protein Isoform	ATRIP Antibody [Unconjugated]
Antibody Type	Primary
Host Species/Clonality	Sheep Polyclonal
ASSAY	
Sample Type	MCF-7 human breast cancer cell line and LL/2 mouse Lewis lung carcinoma cell line 0.2 mg/mL
Sample Concentration	0.2 mg/mL
Antibody Concentration/Dilution	10 µg/mL
Antibody Diluent	
Detection Mode	Chemiluminescence
Separation Type	Size
Matrix	12-230 kDa
Observed kDa	100 kDa
Publications	None listed

This antibody is validated for Gel-Free, Blot Free, Hands Free Simple Western Systems. To learn about Simple Western Systems, available Simple Western antibodies, or new antibody submissions visit the links below. For additional information, please contact [support@proteinsimple.com](mailto:support@proteinsimple.com).

[Simple Western Systems](#)

[Simple Western Antibody Database](#)

[Simple Western Antibody Submission](#)