

SIMPLE WESTERN CERTIFIED ANTIBODY DATASHEET

[View
Antibody Link](#)

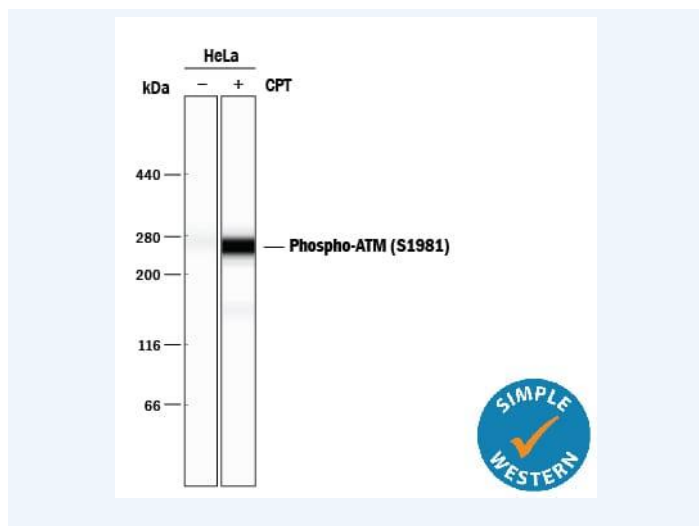


Figure1 Simple Western lane view shows lysates of HeLa human cervical epithelial carcinoma cell line untreated (-) or treated (+) with 1 μ M Camptothecin (CPT) for 1 hour, loaded at 0.2 mg/mL. A specific band was detected for Phospho-ATM (S1981) at approximately 270 kDa (as indicated) using 10 μ g/mL of Rabbit Anti-Human/Mouse/Rat Phospho-ATM (S1981) Antigen Affinity-purified Polyclonal Antibody (Catalog # AF1655). This experiment was conducted under reducing conditions and using the 66-440 kDa separation system.

PROTEIN TARGET/ANTIBODY	
Protein Target	ATM, phospho
Protein Isoform	pATM (Ser1981)
Antibody Type	Primary
Host Species/Clonality	Rabbit Polyclonal
ASSAY	
Sample Type	HeLa human cervical epithelial carcinoma cell line treated with Camptothecin (CPT)
Sample Concentration	0.2 mg/mL
Antibody Concentration/Dilution	10 μ g/mL
Antibody Diluent	
Detection Mode	Chemiluminescence
Separation Type	Size
Matrix	66-440kD
Observed kDa	270
Publications	None listed

This antibody is certified for Gel-Free, Blot Free, Hands Free Simple Western Systems. To learn about Simple Western Systems, available Simple Western antibodies, or new antibody submissions visit the links below. For additional information, please contact support@proteinsimple.com.

[Simple Western Systems](#)

[Simple Western Antibody Database](#)

[Simple Western Antibody Submission](#)