

## SIMPLE WESTERN CERTIFIED ANTIBODY DATASHEET

[View  
Antibody Link](#)

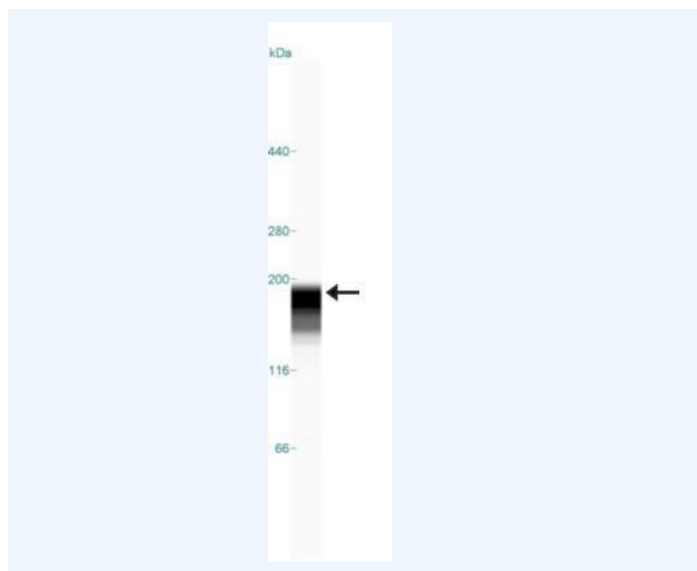


Figure1 Simple Western: ATAD2 Antibody [NBP1-84123] - Simple Western lane view shows a specific band for ATAD2 in 0.2 mg/ml of U-251MG sp lysate. This experiment was performed under reducing conditions using the 66-440 kDa separation system.

PROTEIN TARGET/ANTIBODY	
Protein Target	ATAD2
Protein Isoform	ATAD2
Antibody Type	Primary
Host Species/Clonality	Rabbit Polyclonal
ASSAY	
Sample Type	U-251MG sp
Sample Concentration	0.2 mg/ml
Antibody Concentration/Dilution	1:50
Antibody Diluent	
Detection Mode	Chemiluminescence
Separation Type	Size
Matrix	66-440 kDa
Observed kDa	178
Publications	None listed

This antibody is validated for Gel-Free, Blot Free, Hands Free Simple Western Systems. To learn about Simple Western Systems, available Simple Western antibodies, or new antibody submissions visit the links below. For additional information, please contact [support@proteinsimple.com](mailto:support@proteinsimple.com).

[Simple Western Systems](#)

[Simple Western Antibody Database](#)

[Simple Western Antibody Submission](#)