

SIMPLE WESTERN CERTIFIED ANTIBODY DATASHEET

[View
Antibody Link](#)

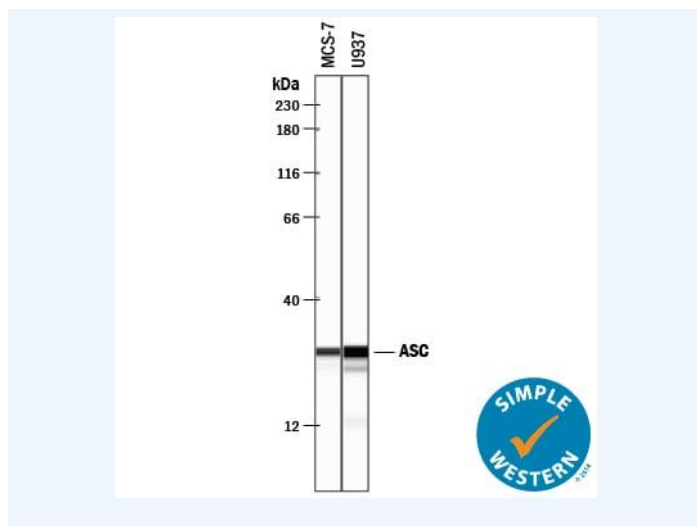


Figure1 Simple Western lane view shows lysates of MCF-7 human breast cancer cell line and U937 human histiocytic lymphoma cell line, loaded at 0.2 mg/mL. A specific band was detected for ASC at approximately 28 kDa (as indicated) using 10 µg/mL of Goat Anti-Human ASC Antigen Affinity-purified Polyclonal Antibody (Catalog # AF3805) followed by 1:50 dilution of HRP-conjugated Anti-Goat IgG Secondary Antibody (Catalog # HAF109). This experiment was conducted under reducing conditions and using the 12-230 kDa separation system.

| PROTEIN TARGET/ANTIBODY | |
|---------------------------------|-----------------------------------------------------------------------------------|
| Protein Target | ASC |
| Protein Isoform | ASC |
| Antibody Type | Primary |
| Host Species/Clonality | Goat Polyclonal |
| ASSAY | |
| Sample Type | MCF-7 human breast cancer cell line and U937 human histiocytic lymphoma cell line |
| Sample Concentration | 0.2 mg/mL |
| Antibody Concentration/Dilution | 10 µg/mL |
| Antibody Diluent | |
| Detection Mode | Chemiluminescence |
| Separation Type | Size |
| Matrix | 12-230 kDa |
| Observed kDa | 28 kDa |
| Publications | None listed |

This antibody is certified for Gel-Free, Blot Free, Hands Free Simple Western Systems. To learn about Simple Western Systems, available Simple Western antibodies, or new antibody submissions visit the links below. For additional information, please contact support@proteinsimple.com.

[Simple Western Systems](#)

[Simple Western Antibody Database](#)

[Simple Western Antibody Submission](#)