

SIMPLE WESTERN CERTIFIED ANTIBODY DATASHEET

[View Antibody Link](#)

1

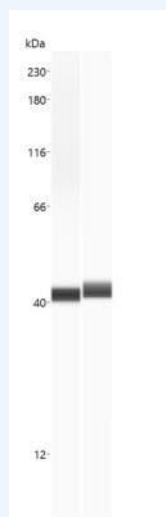


Figure 1: Simple Western: Arginase 1/ARG1/liver Arginase Antibody (CL0186) [NBP2-14787] - Simple Western lane view shows a specific band for ARG1 in human and mouse Liver lysate using ARG1 antibody (NBP2-14787) at 25 ug/ml. This experiment was performed under reducing conditions using the 12-230 kDa separation system.

2

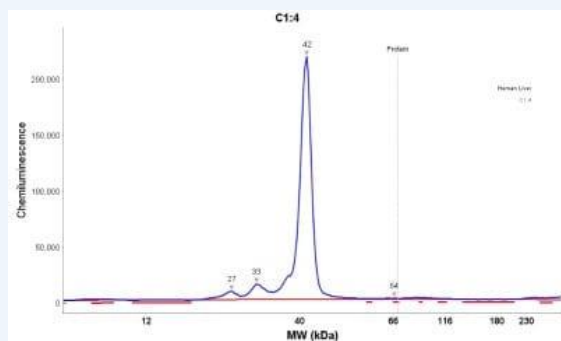


Figure 2: Simple Western: Arginase 1/ARG1/liver Arginase Antibody (CL0186) [NBP2-14787] - Electropherogram image(s) of corresponding Simple Western lane view. Arginase 1/ARG1/liver Arginase antibody was used at 1:20 dilution on Liver lysate(s).

PROTEIN TARGET/ANTIBODY	
Protein Target	ARG1
Protein Isoform	ARG1
Antibody Type	Primary
Host Species/Clonality	Mouse Monoclonal
ASSAY	
Sample Type	Liver lysate
Sample Concentration	25 ug/ml
Antibody Concentration	1:20
Antibody Diluent	
Detection Mode	Chemiluminescence
Separation Type	Size
Matrix	12-230 kDa
Observed kDa	42 kDa

PUBLICATIONS
None Listed

This antibody is validated for Gel-Free, Blot Free, Hands Free Simple Western Systems. To learn about Simple Western Systems, available Simple Western antibodies, or new antibody submissions visit the links below. For additional information, please contact support@proteinsimple.com.

[Simple Western Systems](#)

[Simple Western Antibody Database](#)

[Simple Western Antibody Submission](#)

PAGE 2/2

biotechne[®]

bio-techne.com

Global info@bio-techne.com bio-techne.com/find-us/distributors TEL +1 612 379 2956
North America TEL 800 343 7475 **Europe | Middle East | Africa** TEL +44 (0)1235 529449
China info.cn@bio-techne.com TEL +86 (21) 52380373

Trademarks and registered trademarks are the property of their respective owners.