

SIMPLE WESTERN CERTIFIED ANTIBODY DATASHEET

[View
Antibody Link](#)

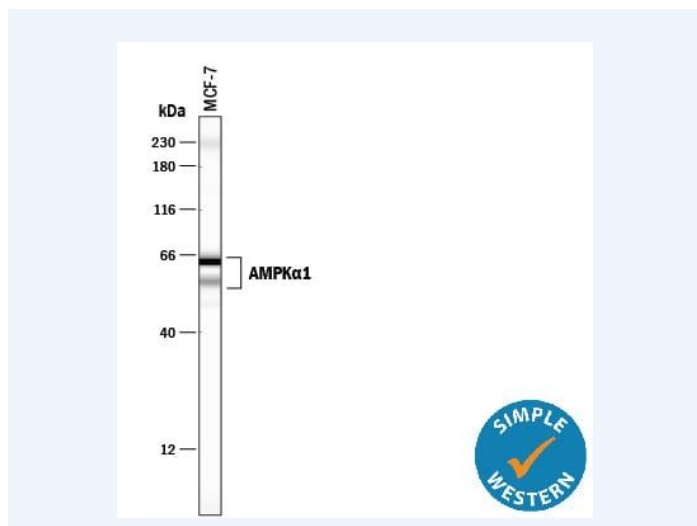


Figure1 Simple Western lane view shows lysates of MCF-7 human breast cancer cell line, loaded at 0.2 mg/mL. Specific bands were detected for AMPK α 1 at approximately 57 & 64 kDa (as indicated) using 20 μ g/mL of Mouse Anti-Human/Mouse/Rat AMPK α 1 Monoclonal Antibody (Catalog # MAB3197). This experiment was conducted under reducing conditions and using the 12-230 kDa separation system. Non-specific interaction with the 230 kDa Simple Western standard may be seen with this antibody.

PROTEIN TARGET/ANTIBODY	
Protein Target	AMPK alpha 1
Protein Isoform	AMPK alpha 1
Antibody Type	Primary
Host Species/Clonality	Mouse Monoclonal
ASSAY	
Sample Type	MCF-7 human breast cancer cell line
Sample Concentration	0.2 mg/mL
Antibody Concentration/Dilution	20 μ g/mL
Antibody Diluent	
Detection Mode	Chemiluminescence
Separation Type	Size
Matrix	12-230 kDa
Observed kDa	57 & 64
Publications	None listed

PUBLICATIONS

1. Yanes RE, Zhang H, Shen Y, Weyand CM, Goronzy JJ. Metabolic reprogramming in memory CD4 T cell responses of old adults. Clin Immunol. 2019 Oct;207:58-67. doi: 10.1016/j.clim.2019.07.003. Epub 2019 Jul 4. PMID: 31279855; PMCID: PMC6827883.

This antibody is certified for Gel-Free, Blot Free, Hands Free Simple Western Systems. To learn about Simple Western Systems, available Simple Western antibodies, or new antibody submissions visit the links below. For additional information, please contact support@proteinsimple.com.

[Simple Western Systems](#)

[Simple Western Antibody Database](#)

[Simple Western Antibody Submission](#)

PAGE 2/2