

## SIMPLE WESTERN CERTIFIED ANTIBODY DATASHEET

[View Antibody Link](#)

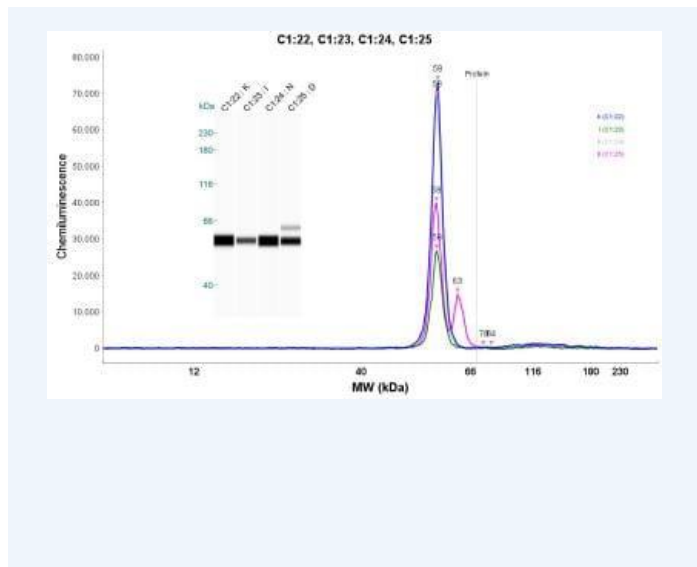


Figure1 ALDH1A2 Antibody [NBP1-87158] - Detection of ALDH1A2 in K562 cells using ALDH1A2 antibody at a dilution of 1:50. K (lane 1) = Wild Type K562, I (lane 2) = Imatinib Resistant K562, N (lane 3) = Nilotinib Resistant K562 and D (lane 4) = Dasatinib Resistant K562. Image from verified customer review.

PROTEIN TARGET/ANTIBODY	
Protein Target	ALDH1A2
Protein Isoform	ALDH1A2 Antibody
Antibody Type	Primary
Host Species/Clonality	Rabbit Polyclonal
ASSAY	
Sample Type	Wild Type K562 cells, Imatinib Resistant K562 cells, Nilotinib Resistant K562 cells and Dasatinib Resistant K56 cells
Sample Concentration	
Antibody Concentration/Dilution	1:50
Antibody Diluent	
Detection Mode	Chemiluminescence
Separation Type	Size
Matrix	12-230 kDa
Observed kDa	
Publications	None listed

This antibody is validated for Gel-Free, Blot Free, Hands Free Simple Western Systems. To learn about Simple Western Systems, available Simple Western antibodies, or new antibody submissions visit the links below. For additional information, please contact [support@proteinsimple.com](mailto:support@proteinsimple.com).

[Simple Western Systems](#)

[Simple Western Antibody Database](#)

[Simple Western Antibody Submission](#)