

SIMPLE WESTERN CERTIFIED ANTIBODY DATASHEET

[View
Antibody Link](#)

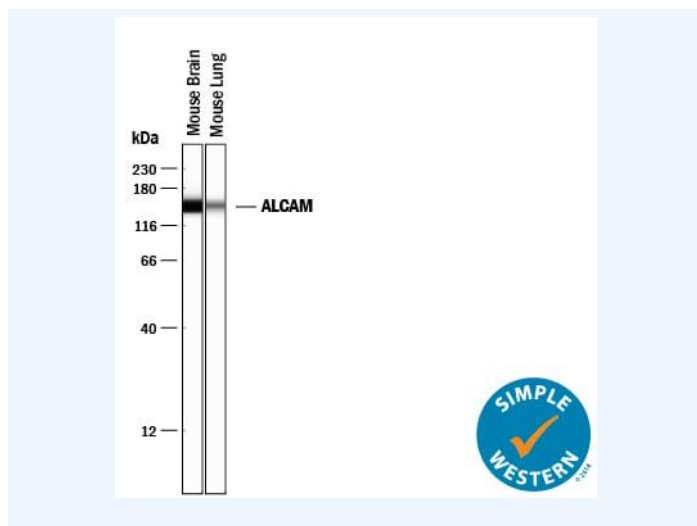


Figure1 Simple Western lane view shows lysates of mouse brain tissue and mouse lung tissue loaded at 0.2 mg/mL. A specific band was detected for ALCAM/CD166 at approximately 149 kDa (as indicated) using 12.5 µg/mL of Goat Anti-Mouse/Rat/Canine ALCAM/CD166 Antigen Affinity-purified Polyclonal Antibody (Catalog # AF1172) followed by 1:50 dilution of HRP-conjugated Anti-Goat IgG Secondary Antibody. This experiment was conducted under reducing conditions and using the 12-230 kDa separation system.

PROTEIN TARGET/ANTIBODY	
Protein Target	ALCAM/CD166
Protein Isoform	ALCAM/CD166
Antibody Type	Primary
Host Species/Clonality	Goat Polyclonal
ASSAY	
Sample Type	Mouse brain (total) tissue and mouse lung tissue
Sample Concentration	0.2 mg/mL
Antibody Concentration/Dilution	12.5 µg/mL
Antibody Diluent	
Detection Mode	Chemiluminescence
Separation Type	Size
Matrix	12-230 kDa
Observed kDa	149 kDa
Publications	None listed

This antibody is certified for Gel-Free, Blot Free, Hands Free Simple Western Systems. To learn about Simple Western Systems, available Simple Western antibodies, or new antibody submissions visit the links below. For additional information, please contact support@proteinsimple.com.

[Simple Western Systems](#)

[Simple Western Antibody Database](#)

[Simple Western Antibody Submission](#)