

## SIMPLE WESTERN CERTIFIED ANTIBODY DATASHEET

[View Antibody Link](#)

1



Figure 1: ALAD Antibody [NBP1-89158] - Simple Western lane view shows a specific band for ALAD in 0.2 mg/ml of h. Liver (left) and h. Adrenal (right) lysate(s). This experiment was performed under reducing conditions using the 12-230 kDa separation system.

2

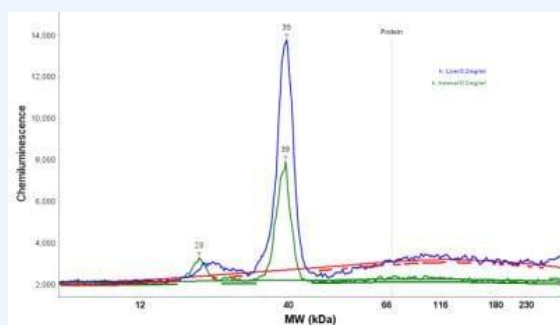


Figure 2: ALAD Antibody [NBP1-89158] - Electropherogram image of the corresponding Simple Western lane view. ALAD antibody was used at 1:200 dilution on h. Liver and h. Adrenal lysate(s) respectively.

PROTEIN TARGET/ANTIBODY	
Protein Target	ALAD
Protein Isoform	ALAD
Antibody Type	Primary
Host Species/Clonality	Rabbit Polyclonal
ASSAY	
Sample Type	h. Liver (left) and h. Adrenal (right) lysates
Sample Concentration	0.2 mg/ml
Antibody Concentration	1:200
Antibody Diluent	
Detection Mode	Chemiluminescence
Separation Type	Size
Matrix	12-230 kDa
Observed kDa	39

PUBLICATIONS
None Listed

This antibody is validated for Gel-Free, Blot Free, Hands Free Simple Western Systems. To learn about Simple Western Systems, available Simple Western antibodies, or new antibody submissions visit the links below. For additional information, please contact [support@proteinsimple.com](mailto:support@proteinsimple.com).

[Simple Western Systems](#)

[Simple Western Antibody Database](#)

[Simple Western Antibody Submission](#)

PAGE 2/2

**bio-techne**<sup>®</sup>

bio-techne.com

**Global** [info@bio-techne.com](mailto:info@bio-techne.com) [bio-techne.com/find-us/distributors](http://bio-techne.com/find-us/distributors) TEL +1 612 379 2956  
**North America** TEL 800 343 7475 **Europe | Middle East | Africa** TEL +44 (0)1235 529449  
**China** [info.cn@bio-techne.com](mailto:info.cn@bio-techne.com) TEL +86 (21) 52380373

Trademarks and registered trademarks are the property of their respective owners.