

SIMPLE WESTERN CERTIFIED ANTIBODY DATASHEET

[View
Antibody Link](#)

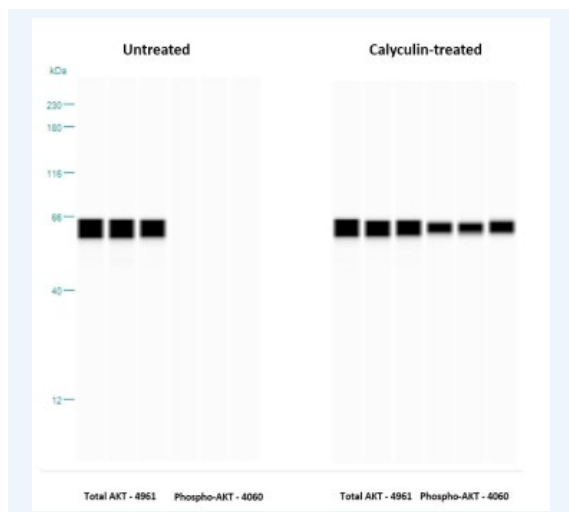


Figure 1: Analysis of lysate from u from untreated (left) and calyculintreated (right) Jurkat cells using the optimized lysate concentration and antibody dilution.

PROTEIN TARGET/ANTIBODY	
Protein Target	AKT
Protein Isoform	AKT1/2/3
Antibody Type	Primary
Host Species/Clonality	Rabbit monoclonal
ASSAY	
Sample Type	Jurkat + 294002 or Calyculin
Sample Concentration	0.1 mg/mL
Antibody Concentration/Dilution	1:50
Antibody Diluent	
Detection Mode	Chemiluminescent
Separation Type	Size
Matrix	12-230 kDa
Observed kDa	61

PUBLICATIONS

1. Lu J, Allred CC, Jensen MD. Human adipose tissue protein analyses using capillary western blot technology. *Nutr Diabetes*. 2018 Apr 25;8(1):26. doi: 10.1038/s41387-018-0030-4. PMID: 29695704; PMCID: PMC5916899.
2. Guo H, Gao M, Lu Y, Liang J, Lorenzi PL, Bai S, Hawke DH, Li J, Dogruluk T, Scott KL, Jonasch E, Mills GB, Ding Z. Coordinate phosphorylation of multiple residues on single AKT1 and AKT2 molecules. *Oncogene*. 2014 Jun 26;33(26):3463-72. doi: 10.1038/onc.2013.301. Epub 2013 Aug 5. PMID: 23912456; PMCID: PMC3915040.
3. Iacovides DC, Johnson AB, Wang N, Boddapati S, Korkola J, Gray JW. Identification and quantification of AKT isoforms and phosphoforms in breast cancer using a novel nanofluidic immunoassay. *Mol Cell Proteomics*. 2013 Nov;12(11):3210-20. doi: 10.1074/mcp.M112.023119. Epub 2013 Aug 8. PMID: 23929892; PMCID: PMC3820934.
4. Rodina A, Wang T, Yan P, Gomes ED, Dunphy MP, Pillarsetty N, Koren J, Gerecitano JF, Taldone T, Zong H, Caldas-Lopes E, Alpaugh M, Corben A, Riolo M, Beattie B, Pressl C, Peter RI, Xu C, Trondl R, Patel HJ, Shimizu F, Bolaender A, Yang C, Panchal P, Farooq MF, Kishinevsky S, Modi S, Lin O, Chu F, Patil S, Erdjument-Bromage H, Zanzonico P, Hudis C, Studer L, Roboz GJ, Cesarman E, Cerchietti L, Levine R, Melnick A, Larson SM, Lewis JS, Guzman ML, Chiosis G. The epichaperome is an integrated chaperome network that facilitates tumour survival. *Nature*. 2016 Oct 20;538(7625):397-401. doi: 10.1038/nature19807. Epub 2016 Oct 5. PMID: 27706135; PMCID: PMC5283383.
5. Luo H, Cong S, Dong J, Jin L, Jiang D, Wang X, Chen Q, Li F. Paired-related homeobox 1 overexpression promotes multidrug resistance via PTEN/PI3K/AKT signaling in MCF-7 breast cancer cells. *Mol Med Rep*. 2020 Oct;22(4):3183-3190. doi: 10.3892/mmr.2020.11414. Epub 2020 Aug 4. PMID: 32945446; PMCID: PMC7453582.

This antibody is validated for Gel-Free, Blot Free, Hands Free Simple Western Systems. To learn about Simple Western Systems, available Simple Western antibodies, or new antibody submissions visit the links below. For additional information, please contact support@proteinsimple.com.

[Simple Western Systems](#)

[Simple Western Antibody Database](#)

[Simple Western Antibody Submission](#)

PAGE 2/2

biotechne[®]

bio-techne.com

Global info@bio-techne.com bio-techne.com/find-us/distributors TEL +1 612 379 2956
North America TEL 800 343 7475 Europe | Middle East | Africa TEL +44 (0)1235 529449
China info.cn@bio-techne.com TEL +86 (21) 52380373

Trademarks and registered trademarks are the property of their respective owners.