

## SIMPLE WESTERN CERTIFIED ANTIBODY DATASHEET

[View  
Antibody Link](#)

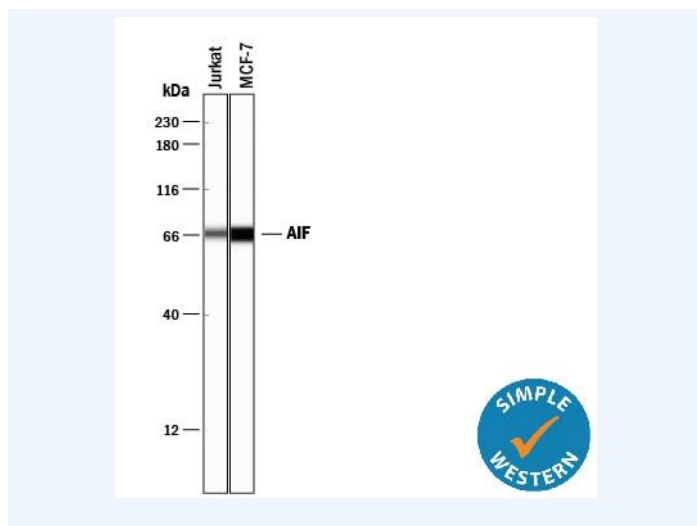


Figure1 Simple Western lane view shows lysates of Jurkat human acute T cell leukemia cell line and MCF-7 human breast cancer cell line, loaded at 0.2 mg/mL. A specific band was detected for AIF at approximately 69 kDa (as indicated) using 1 µg/mL of Rabbit Anti-Human/Mouse/Rat AIF Antigen Affinity-purified Polyclonal Antibody (Catalog # AF1457). This experiment was conducted under reducing conditions and using the 12-230 kDa separation system.

PROTEIN TARGET/ANTIBODY	
Protein Target	AIF
Protein Isoform	AIF
Antibody Type	Primary
Host Species/Clonality	Rabbit Polyclonal
ASSAY	
Sample Type	Jurkat human acute T cell leukemia cell line and MCF-7 human breast cancer cell line
Sample Concentration	0.2 mg/mL
Antibody Concentration/Dilution	1 µg/mL
Antibody Diluent	
Detection Mode	Chemiluminescence
Separation Type	Size
Matrix	12-230 kDa
Observed kDa	69
Publications	None listed

This antibody is certified for Gel-Free, Blot Free, Hands Free Simple Western Systems. To learn about Simple Western Systems, available Simple Western antibodies, or new antibody submissions visit the links below. For additional information, please contact [support@proteinsimple.com](mailto:support@proteinsimple.com).

[Simple Western Systems](#)

[Simple Western Antibody Database](#)

[Simple Western Antibody Submission](#)