

SIMPLE WESTERN CERTIFIED ANTIBODY DATASHEET

[View
Antibody Link](#)

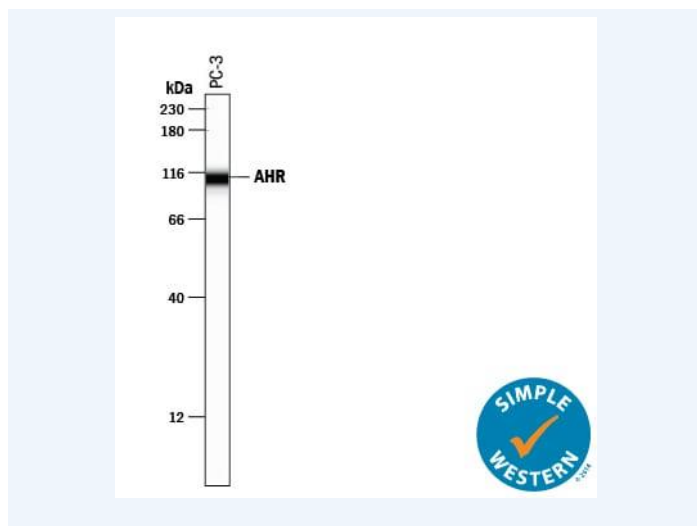


Figure1 Simple Western lane view shows lysates of PC-3 human prostate cancer cell line, loaded at 0.2 mg/mL. A specific band was detected for AHR at approximately 109 kDa (as indicated) using 10 µg/mL of Sheep Anti-Human AHR Antigen Affinity-purified Polyclonal Antibody (Catalog # AF6185) followed by 1:50 dilution of HRP-conjugated Anti-Sheep IgG Secondary Antibody (Catalog # HAF016) . This experiment was conducted under reducing conditions and using the 12-230 kDa separation system.

PROTEIN TARGET/ANTIBODY	
Protein Target	AHR
Protein Isoform	AHR
Antibody Type	Primary
Host Species/Clonality	Sheep Polyclonal
ASSAY	
Sample Type	PC-3 human prostate cancer cell line
Sample Concentration	0.2 mg/mL
Antibody Concentration/Dilution	10 µg/mL
Antibody Diluent	
Detection Mode	Chemiluminescence
Separation Type	Size
Matrix	12-230 kDa
Observed kDa	109 kDa
Publications	None listed

This antibody is certified for Gel-Free, Blot Free, Hands Free Simple Western Systems. To learn about Simple Western Systems, available Simple Western antibodies, or new antibody submissions visit the links below. For additional information, please contact support@proteinsimple.com.

[Simple Western Systems](#)

[Simple Western Antibody Database](#)

[Simple Western Antibody Submission](#)