

SIMPLE WESTERN CERTIFIED ANTIBODY DATASHEET

[View Antibody Link](#)

1



Figure 1: ADI1 Antibody [NBP2-38251] - Simple Western lane view shows a specific band for ADI1 in 0.2 mg/ml of HepG2 lysate(s). This experiment was performed under reducing conditions using the 12-230 kDa separation system.

2

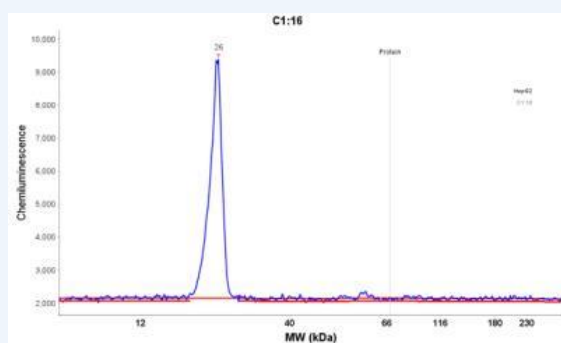


Figure 2: ADI1 Antibody [NBP2-38251] - Electropherogram image of the corresponding Simple Western lane view. ADI1 antibody was used at 1:25 dilution on HepG2 lysate(s) respectively.

PROTEIN TARGET/ANTIBODY	
Protein Target	ADI1
Protein Isoform	ADI1
Antibody Type	Primary
Host Species/Clonality	Rabbit Polyclonal
ASSAY	
Sample Type	HepG2 lysate
Sample Concentration	0.2 mg/ml
Antibody Concentration	1:25
Antibody Diluent	
Detection Mode	Chemiluminescence
Separation Type	Size
Matrix	12-230 kDa
Observed kDa	26

PUBLICATIONS	
None Listed	

This antibody is validated for Gel-Free, Blot Free, Hands Free Simple Western Systems. To learn about Simple Western Systems, available Simple Western antibodies, or new antibody submissions visit the links below. For additional information, please contact support@proteinsimple.com.

[Simple Western Systems](#)

[Simple Western Antibody Database](#)

[Simple Western Antibody Submission](#)