

SIMPLE WESTERN CERTIFIED ANTIBODY DATASHEET

[View Antibody Link](#)

1

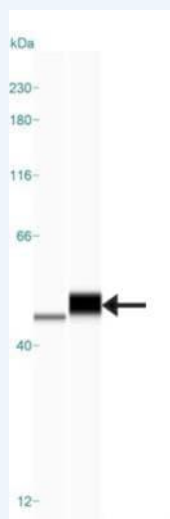


Figure 1: ADE2 Antibody [NBP1-90235] - Simple Western lane view shows a specific band for ADE2 in 0.2 mg/ml of RT-4 and U-251MG lysate. This experiment was performed under reducing conditions using the 12-230 kDa separation system.

2

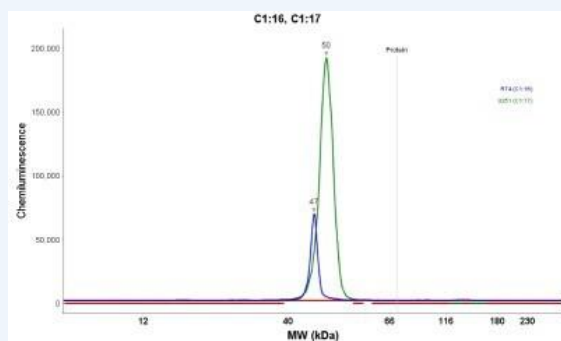


Figure 2: ADE2 Antibody [NBP1-90235] - Electropherogram image(s) of corresponding Simple Western lane view. ADE2 antibody was used at 1:20 dilution on RT-4 and U-251MG lysate(s).

PROTEIN TARGET/ANTIBODY	
Protein Target	ADE2
Protein Isoform	ADE2
Antibody Type	Primary
Host Species/Clonality	Rabbit Polyclonal
ASSAY	
Sample Type	RT-4 and U-251MG
Sample Concentration	0.2 mg/ml
Antibody Concentration	1:20
Antibody Diluent	
Detection Mode	Chemiluminescence
Separation Type	Size
Matrix	12-230 kDa
Observed kDa	47/50

PUBLICATIONS
None Listed

This antibody is validated for Gel-Free, Blot Free, Hands Free Simple Western Systems. To learn about Simple Western Systems, available Simple Western antibodies, or new antibody submissions visit the links below. For additional information, please contact support@proteinsimple.com.

[Simple Western Systems](#)

[Simple Western Antibody Database](#)

[Simple Western Antibody Submission](#)

PAGE 2/2

bio-techne[®]

bio-techne.com

Global info@bio-techne.com bio-techne.com/find-us/distributors TEL +1 612 379 2956
North America TEL 800 343 7475 **Europe | Middle East | Africa** TEL +44 (0)1235 529449
China info.cn@bio-techne.com TEL +86 (21) 52380373

Trademarks and registered trademarks are the property of their respective owners.