

SIMPLE WESTERN CERTIFIED ANTIBODY DATASHEET

[View
Antibody Link](#)

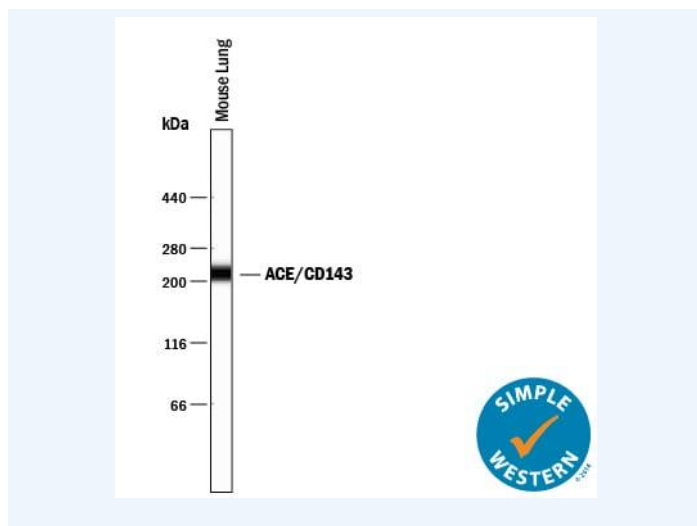


Figure1 Simple Western lane view shows lysates of mouse lung tissue, loaded at 0.2 mg/mL. A specific band was detected for ACE/CD143 at approximately 218 kDa (as indicated) using 10 µg/mL of Goat Anti-Mouse ACE/CD143 Antigen Affinity-purified Polyclonal Antibody (Catalog # AF1513) followed by 1:50 dilution of HRP-conjugated Anti-Goat IgG Secondary Antibody (Catalog # HAF109). This experiment was conducted under reducing conditions and using the 66-440kDa separation system.

PROTEIN TARGET/ANTIBODY	
Protein Target	ACE/CD143
Protein Isoform	ACE/CD143
Antibody Type	Primary
Host Species/Clonality	Goat Polyclonal
ASSAY	
Sample Type	Mouse lung tissue
Sample Concentration	0.2 mg/mL
Antibody Concentration/Dilution	10 µg/mL
Antibody Diluent	
Detection Mode	Chemiluminescence
Separation Type	Size
Matrix	66-440kD
Observed kDa	218 kDa
Publications	None listed

This antibody is certified for Gel-Free, Blot Free, Hands Free Simple Western Systems. To learn about Simple Western Systems, available Simple Western antibodies, or new antibody submissions visit the links below. For additional information, please contact support@proteinsimple.com.

[Simple Western Systems](#)

[Simple Western Antibody Database](#)

[Simple Western Antibody Submission](#)