

SIMPLE WESTERN CERTIFIED ANTIBODY DATASHEET

[View Antibody Link](#)

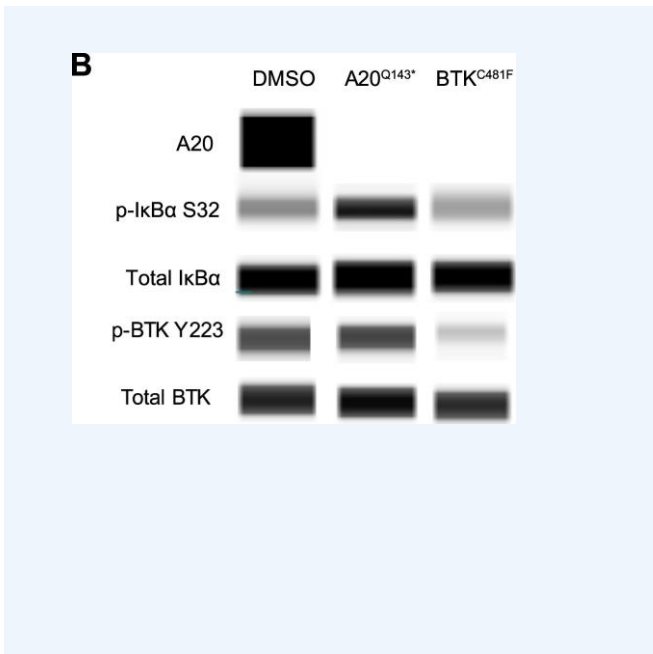


Figure: Loss of A20 and BTK C481F mutation as mechanisms of BTK inhibitor resistance in TMD8. (A) Cell viability of BTK inhibitor (BTKi)-sensitive (TMD8BTKi-S) and BTKi-resistant (TMD8BTKi-R) cells to ibrutinib, 96 hour CellTiterGlo assay, mean ± SEM, n = 4. (B) Protein lysates were generated for TMD8 (DMSO control), TMD8A20-Q143\* and TMD8BTK-C481F cell lines, and protein expression of A20, p-IkBa, total IkBa, p-BTK and total BTK was analyzed using Simple Western.

PROTEIN TARGET/ANTIBODY	
Protein Target	A20/TNFAIP3
Protein Isoform	Unmodified
Antibody Type	Primary
Host Species/Clonality	Rabbit Monoclonal
ASSAY	
Sample Type	TMD8
Sample Concentration	Not_ Stated
Antibody Concentration/Dilution	Not_ Stated
Antibody Diluent	
Detection Mode	Chemiluminescence
Separation Type	Size
Matrix	Not_ Stated
Observed kDa	Not_ Stated

\*Image collected and cropped by CiteAb from the following publication <https://dx.plos.org/10.1371/journal.pone.0171221> licensed under a CC-BY license

## PUBLICATIONS

1. Yahiaoui, A., Meadows, S. A., et al. PI3K $\delta$  inhibitor idelalisib in combination with BTK inhibitor ONO/GS-4059 in diffuse large B cell lymphoma with acquired resistance to PI3K $\delta$  and BTK inhibitors. PLoS One. 2017;12(2):e0171221. 10.1371/JOURNAL.PONE.0171221. PMID:28178345.
- 2.
- 3.
- 4.
- 5.
- 6.

This antibody is validated for Gel-Free, Blot Free, Hands Free Simple Western Systems. To learn about Simple Western Systems, available Simple Western antibodies, or new antibody submissions visit the links below. For additional information, please contact [support@proteinsimple.com](mailto:support@proteinsimple.com).

[Simple Western Systems](#)

[Simple Western Antibody Database](#)

[Simple Western Antibody Submission](#)

PAGE 2/2

**bio-techne**<sup>®</sup>

[bio-techne.com](http://bio-techne.com)

**Global** [info@bio-techne.com](mailto:info@bio-techne.com) [bio-techne.com/find-us/distributors](http://bio-techne.com/find-us/distributors) TEL +1 612 379 2956  
**North America** TEL 800 343 7475 **Europe | Middle East | Africa** TEL +44 (0)1235 529449  
**China** [info.cn@bio-techne.com](mailto:info.cn@bio-techne.com) TEL +86 (21) 52380373

Trademarks and registered trademarks are the property of their respective owners.