

SIMPLE WESTERN CERTIFIED ANTIBODY DATASHEET

[View
Antibody Link](#)

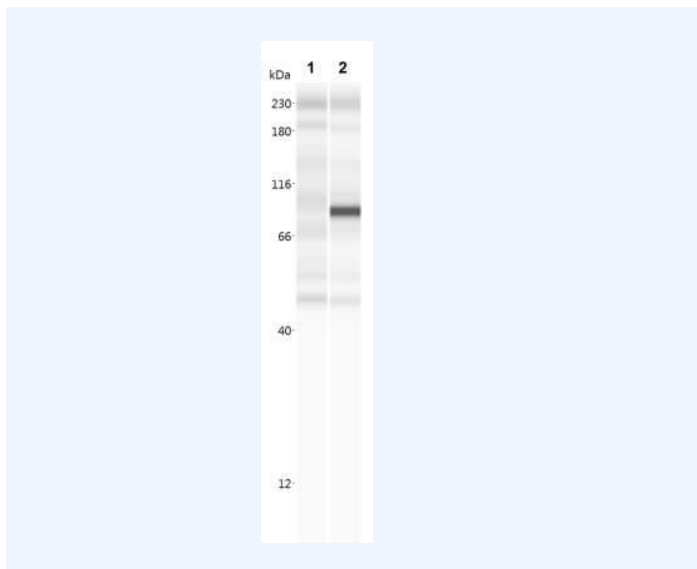


Figure1 A. aeolicus BPL/BioID2 Antibody (SS QD1) [NBP2-59940]
- Lane 1: lysate from untransfected HEK293 cells. Lane 2: lysate from HEK293 cells transfected with BioID2-PTEN. A specific signal for BioID2-PTEN is visible at ~94kDa.

PROTEIN TARGET/ANTIBODY	
Protein Target	A. aeolicus BPL/BioID2
Protein Isoform	A. aeolicus BPL/BioID2 Antibody (SS QD1)
Antibody Type	Primary
Host Species/Clonality	Mouse Monoclonal
ASSAY	
Sample Type	HEK293 cells
Sample Concentration	
Antibody Concentration/Dilution	
Antibody Diluent	
Detection Mode	Chemiluminescence
Separation Type	Size
Matrix	12-230 kDa
Observed kDa	94 kDa
Publications	None listed

This antibody is validated for Gel-Free, Blot Free, Hands Free Simple Western Systems. To learn about Simple Western Systems, available Simple Western antibodies, or new antibody submissions visit the links below. For additional information, please contact support@proteinsimple.com.

[Simple Western Systems](#)

[Simple Western Antibody Database](#)

[Simple Western Antibody Submission](#)