

SIMPLE WESTERN CERTIFIED ANTIBODY DATASHEET

[View
Antibody Link](#)

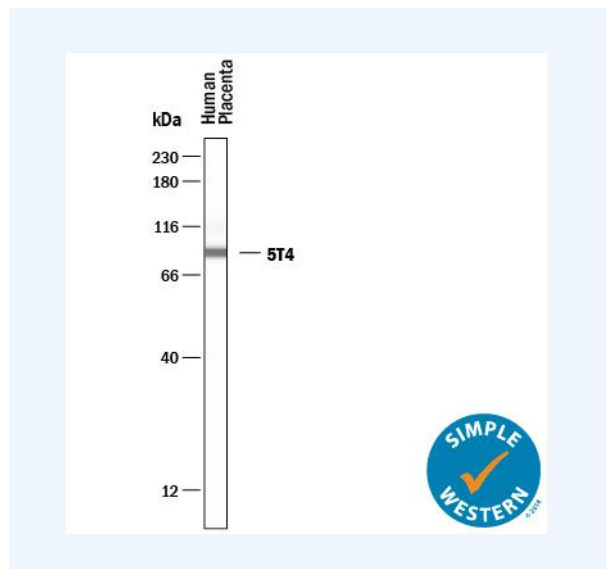


Figure 1 Simple Western lane view shows lysates of human placenta, loaded at 0.2mg/mL. A specific band was detected for 5T4 at approximately 90kDa (as indicated) using 50µg/mL of Sheep Anti-Human 5T4 Antigen Affinity-purified Polyclonal Antibody (Catalog # AF4975) followed by 1:50 dilution of HRP-conjugated Anti-Sheep IgG Secondary Antibody (Catalog# HAF016). This experiment was conducted under reducing conditions and using the 12-230 kDa separation system.

PROTEIN TARGET/ANTIBODY	
Protein Target	5T4
Protein Isoform	
Antibody Type	Primary
Host Species/Clonality	Sheep
ASSAY	
Sample Type	human placenta
Sample Concentration	0.1-1.0 mg/ml
Antibody Concentration/Dilution	50ug/ml
Antibody Diluent	Antibody Diluent 2
Detection Mode	Chemiluminescence
Separation Type	Size
Matrix	12-230 kDa
Observed kDa	90
Publications	None listed

This antibody is validated for Gel-Free, Blot Free, Hands Free Simple Western Systems. To learn about Simple Western Systems, available Simple Western antibodies, or new antibody submissions visit the links below. For additional information, please contact support@proteinsimple.com.

[Simple Western Systems](#)

[Simple Western Antibody Database](#)

[Simple Western Antibody Submission](#)