

SIMPLE WESTERN CERTIFIED ANTIBODY DATASHEET

[View
Antibody Link](#)

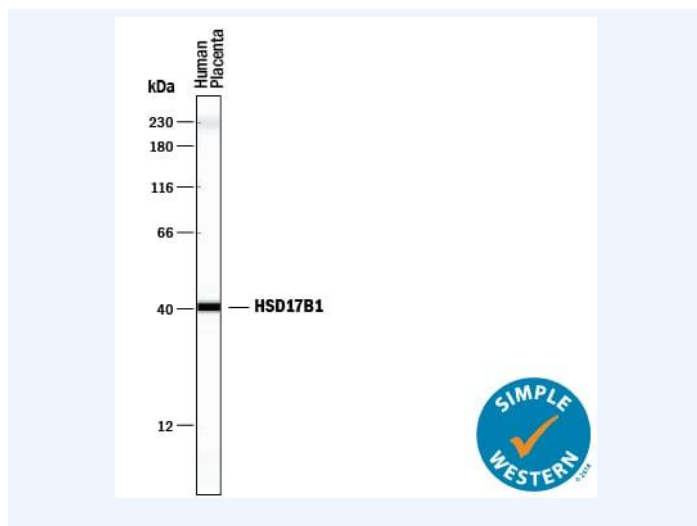


Figure1 Simple Western lane view shows lysates of human placenta tissue, loaded at 0.2 mg/mL. A specific band was detected for 17 β -HSD1/HSD17B1 at approximately 40 kDa (as indicated) using 2.5 μ g/mL of Mouse Anti-Human 17 β -HSD1/HSD17B1 Monoclonal Antibody (Catalog # MAB7178). This experiment was conducted under reducing conditions and using the 230 kDa separation system. Non-specific interaction with the 230 kDa Simple Western standard may be seen with this antibody.

PROTEIN TARGET/ANTIBODY	
Protein Target	17 beta-HSD1/HSD17B1
Protein Isoform	17 beta-HSD1/HSD17B1
Antibody Type	Primary
Host Species/Clonality	Mouse Monoclonal
ASSAY	
Sample Type	Human placenta tissue
Sample Concentration	0.2 mg/mL
Antibody Concentration/Dilution	2.5 μ g/mL
Antibody Diluent	
Detection Mode	Chemiluminescence
Separation Type	Size
Matrix	12-230 kDa
Observed kDa	40 kDa
Publications	None listed

This antibody is certified for Gel-Free, Blot Free, Hands Free Simple Western Systems. To learn about Simple Western Systems, available Simple Western antibodies, or new antibody submissions visit the links below. For additional information, please contact support@proteinsimple.com.

[Simple Western Systems](#)

[Simple Western Antibody Database](#)

[Simple Western Antibody Submission](#)