

SIMPLE WESTERN CERTIFIED ANTIBODY DATASHEET

[View
Antibody Link](#)

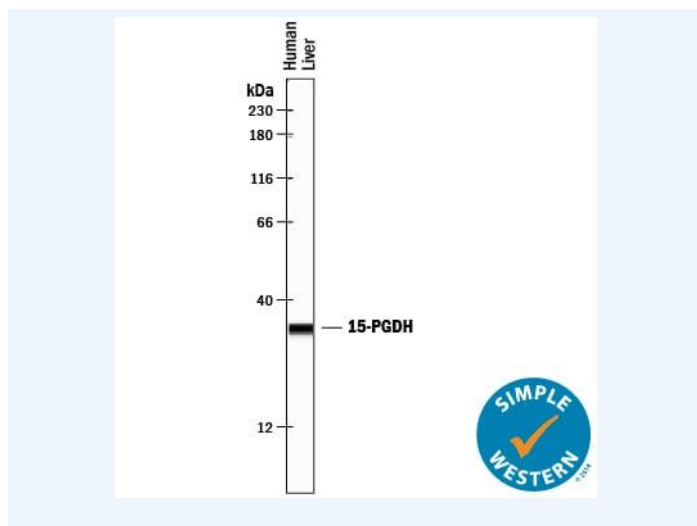


Figure1 Simple Western lane view shows lysates of human liver tissue, loaded at 0.2 mg/mL. A specific band was detected for 15-PGDH/HPGD at approximately 34 kDa (as indicated) using 10µg/mL of Goat Anti-Human 15-PGDH/HPGD Antigen Affinity-purified Polyclonal Antibody (Catalog # AF5660) followed by 1:50 dilution of HRP-conjugated Anti-Goat IgG Secondary Antibody. This experiment was conducted under reducing conditions and using the 12-230 kDa separation system.

PROTEIN TARGET/ANTIBODY	
Protein Target	15-PGDH/HPGD
Protein Isoform	15-PGDH/HPGD
Antibody Type	Primary
Host Species/Clonality	Goat Polyclonal
ASSAY	
Sample Type	Human liver tissue
Sample Concentration	0.2 mg/mL
Antibody Concentration/Dilution	10 µg/mL
Antibody Diluent	
Detection Mode	Chemiluminescence
Separation Type	Size
Matrix	12-230 kDa
Observed kDa	34 kDa
Publications	None listed

This antibody is certified for Gel-Free, Blot Free, Hands Free Simple Western Systems. To learn about Simple Western Systems, available Simple Western antibodies, or new antibody submissions visit the links below. For additional information, please contact support@proteinsimple.com.

[Simple Western Systems](#)

[Simple Western Antibody Database](#)

[Simple Western Antibody Submission](#)