

SIMPLE WESTERN CERTIFIED ANTIBODY DATASHEET

[View
Antibody Link](#)

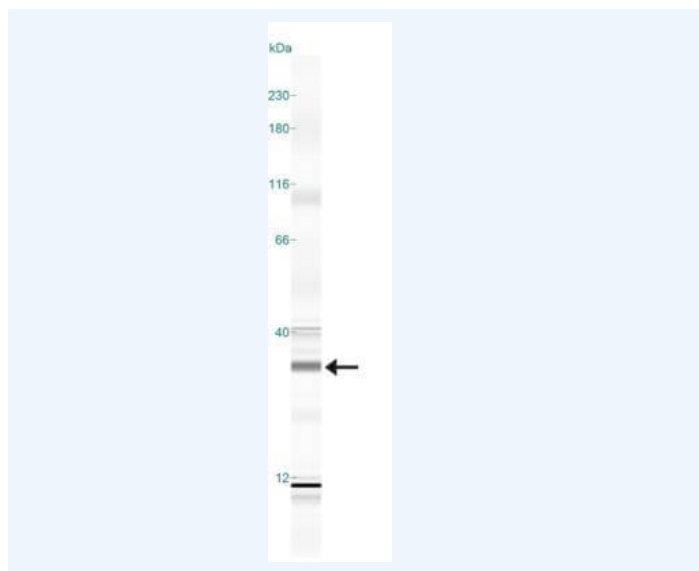


Figure1 Simple Western: 14-3-3 Antibody [NBP2-27370] - Simple Western lane view shows a specific band for 14-3-3 Gamma in 0.5 mg/ml of Human Brain lysate. This experiment was performed under reducing conditions using the 12-230 kDa separation system.

| PROTEIN TARGET/ANTIBODY | |
|---------------------------------|------------------------------|
| Protein Target | 14-3-3 γ |
| Protein Isoform | 14-3-3 gamma (γ) |
| Antibody Type | Primary |
| Host Species/Clonality | Rabbit Polyclonal |
| ASSAY | |
| Sample Type | Human Brain lysate 0.5 mg/ml |
| Sample Concentration | 0.5 mg/ml |
| Antibody Concentration/Dilution | 1:10 |
| Antibody Diluent | |
| Detection Mode | Chemiluminescence |
| Separation Type | Size |
| Matrix | 12-230 kDa |
| Observed kDa | 34 kDa |
| Publications | None listed |

This antibody is validated for Gel-Free, Blot Free, Hands Free Simple Western Systems. To learn about Simple Western Systems, available Simple Western antibodies, or new antibody submissions visit the links below. For additional information, please contact support@proteinsimple.com.

[Simple Western Systems](#)

[Simple Western Antibody Database](#)

[Simple Western Antibody Submission](#)