

SIMPLE WESTERN CERTIFIED ANTIBODY DATASHEET

[View
Antibody Link](#)

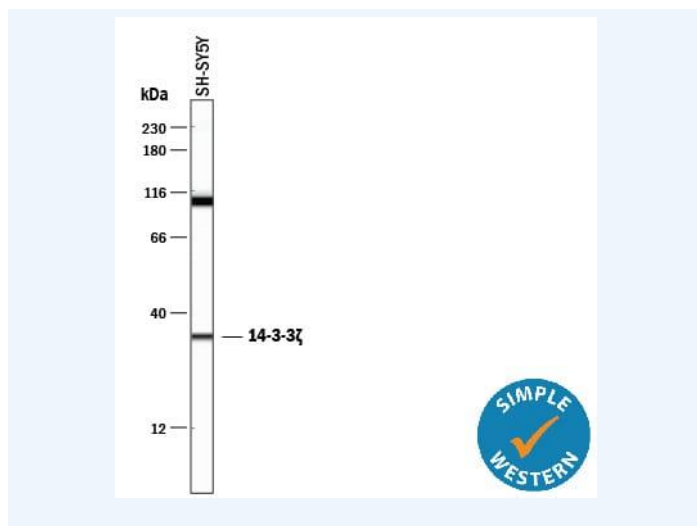


Figure1 Simple Western lane view shows lysates of SH-SY5Y human neuroblastoma cell line, loaded at 0.5 mg/mL. A specific band was detected for 14-3-3 ζ at approximately 34 kDa (as indicated) using 2 μ g/mL of Mouse Anti-Human 14-3-3 ζ Monoclonal Antibody (Catalog # MAB2669). This experiment was conducted & under conditions and using the 12-230 kDa separation system.

PROTEIN TARGET/ANTIBODY	
Protein Target	14-3-3 zeta
Protein Isoform	14-3-3 zeta
Antibody Type	Primary
Host Species/Clonality	Mouse Monoclonal
ASSAY	
Sample Type	SH-SY5Y human neuroblastoma cell line
Sample Concentration	0.5 mg/mL
Antibody Concentration/Dilution	2 μ g/mL
Antibody Diluent	
Detection Mode	Chemiluminescence
Separation Type	Size
Matrix	12-230 kDa
Observed kDa	34
Publications	None listed

This antibody is certified for Gel-Free, Blot Free, Hands Free Simple Western Systems. To learn about Simple Western Systems, available Simple Western antibodies, or new antibody submissions visit the links below. For additional information, please contact support@proteinsimple.com.

[Simple Western Systems](#)

[Simple Western Antibody Database](#)

[Simple Western Antibody Submission](#)